

VR-6HD Remote

Connection Guide

VR-6HD Remote is a dedicated iPad app used exclusively for the Roland VR-6HD.

You can connect the VR-6HD to your iPad via Bluetooth, USB or wireless LAN (Wi-Fi) and use the VR-6HD Remote app to remotely control the VR-6HD.

Connectivity

The VR-6HD Remote app and the VR-6HD disconnect when you switch to a different app or when the iPad enters sleep mode (auto-lock). The app and the unit automatically reconnect when you return to the VR-6HD Remote app, but it may take several seconds for the connection to be restored.

When you want to use VR-6HD Remote for a long time, we recommend that you turn off the auto-lock feature on the iPad.

Change this setting in Settings → Display & Brightness → Auto-Lock.

* This app is compatible with VR-6HD system program version 2.00 and later. Make sure that the system program of the VR-6HD is updated to the latest version.



- The Bluetooth® word mark and logos are registered trademarks owned by Bluetooth SIG, Inc. and any use of such marks by Roland is under license.
- Roland is an either registered trademark or trademark of Roland Corporation in the United States and/or other countries.
- Company names and product names appearing in this document are registered trademarks or trademarks of their respective owners.

Bluetooth® Connection

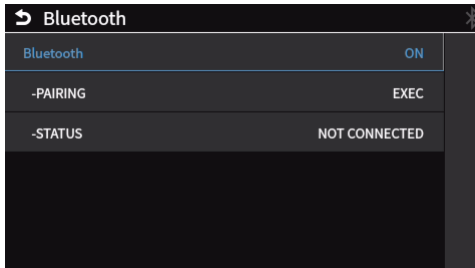
Use Bluetooth to connect the VR-6HD to your iPad.

* The communication speed or connectivity of this unit may become unstable when placed near a device that emits radio waves, such as a wireless LAN-compatible device.

VR-6HD

1. [MENU] button → “SYSTEM” → “Bluetooth” → and set “Bluetooth” to “ON”.

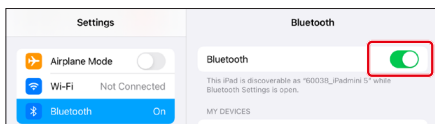
The VR-6HD’s Bluetooth function turns on.



2. Press the [MENU] button to close the menu.

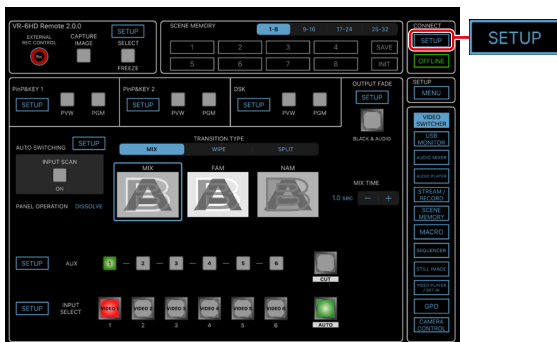
iPad

1. Turn Bluetooth on in the Settings menu.

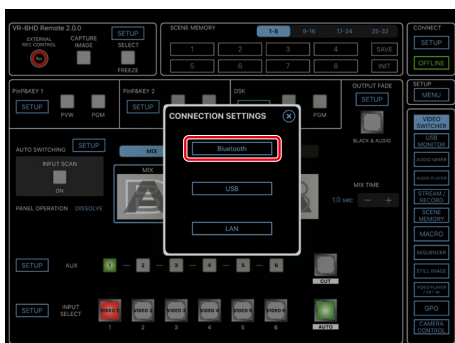


* Even if the available device list shows “Roland VR-6HD”, don’t tap it.

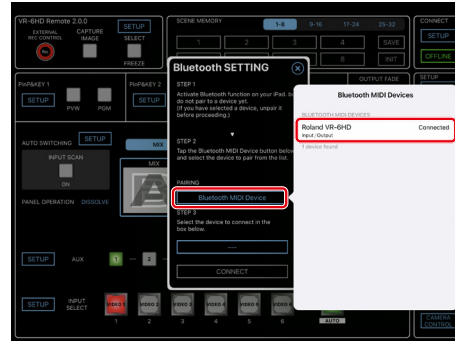
2. Launch the VR-6HD Remote app.
3. Tap the CONNECT [SETUP] button.



4. Tap the [Bluetooth] button.

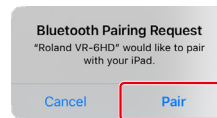


5. Tap the [Bluetooth MIDI Device] button, and tap “Roland VR-6HD” in the list.

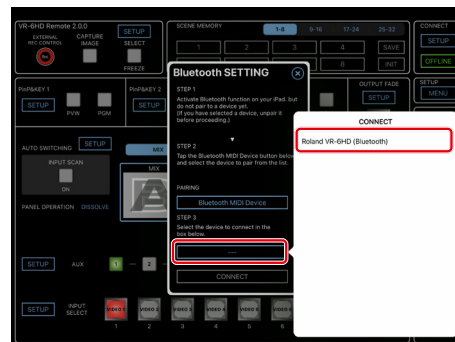


When “Connected” is shown next to the Roland VR-6HD listing, pairing is completed.

* If a dialog box that reads “Bluetooth Pairing Request” appears, tap “Pair”.

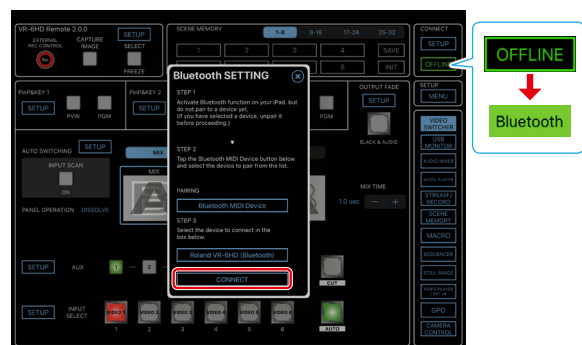


6. Tap the box in STEP 3, and tap “Roland VR-6HD (Bluetooth)” in the list.



* Although you may configure the device to pair with multiple VR-6HD units, the device can only pair with one VR-6HD at a time.

7. Tap the [CONNECT] button.

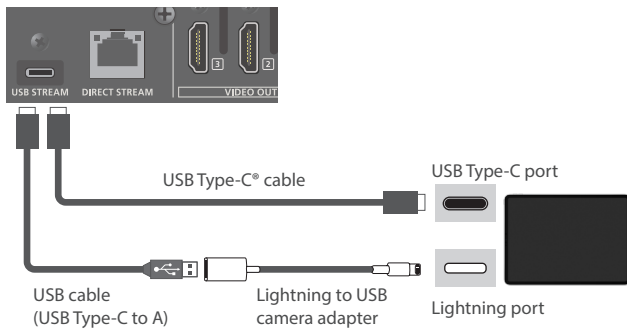


When the status icon changes to “Bluetooth”, the device is connected.

USB Connection

This shows you how to use a USB cable to directly connect your iPad to the VR-6HD.

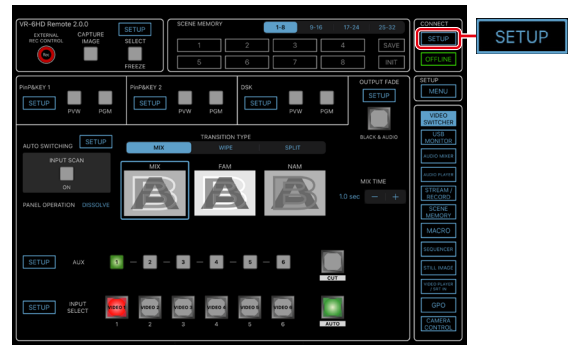
1. Connect the iPad to the USB STREAM port on the VR-6HD.



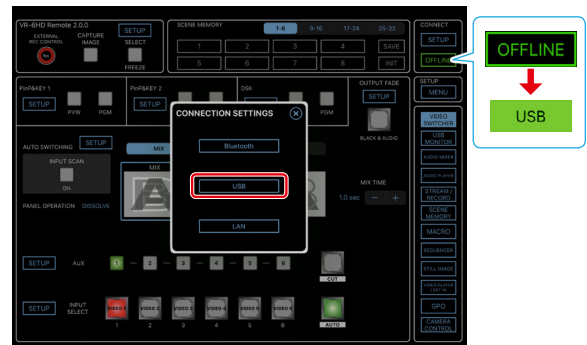
2. Power-on the VR-6HD.

iPad

1. Turn on the iPad and launch VR-6HD Remote.
2. Tap the CONNECT [SETUP] button.



3. Tap the [USB] button.



When the status icon changes to "USB", the device is connected.

MEMO

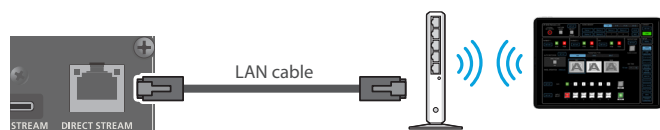
Here are the requirements of your iPad to use the USB MONITOR function.

Item	Requirement
CPU	M1 chip or later
OS	iPadOS17 or later
Others	Equipped with the USB Type-C connector

* Use a USB 3.0 compatible cable for connection.

Connecting via Wireless LAN (Wi-Fi)

Connect the VR-6HD and your wireless LAN master device using a LAN cable, so that you can wirelessly connect to the iPad via the wireless LAN master device.



* See the Owner's Manual of the wireless LAN master device for how to use that device.

* The wireless LAN (Wi-Fi) connection speed and connectivity may be unstable in certain network environments.

VR-6HD

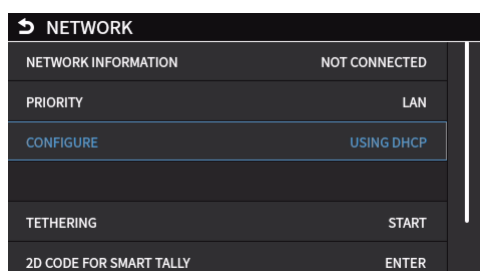
1. Use a LAN cable to connect the LAN port on your wireless LAN master device to the DIRECT STREAM port on the VR-6HD.

* Do not connect to the internet port or WAN port.

2. Turn on the wireless LAN master device and enable DHCP server functionality on the wireless LAN master device.

3. Power-on the VR-6HD.

4. [MENU] button → "NETWORK" → set "CONFIGURE" to "USING DHCP", and press the [VALUE] knob.



The IP address, subnet mask, and default gateway are obtained automatically.

5. Use the [VALUE] knob to select "NETWORK PASSWORD", and press the [VALUE] knob.

The NETWORK PASSWORD screen appears.

6. Set a network password (four characters).

Input the password that's set here when accessing the VR-6HD from VR-6HD Remote.

7. Use the [VALUE] knob to select "NETWORK INFORMATION", and press the [VALUE] knob.

The Network Information screen appears.

When "CONNECTED" is shown in "LINK STATUS", the VR-6HD connection settings are finished.

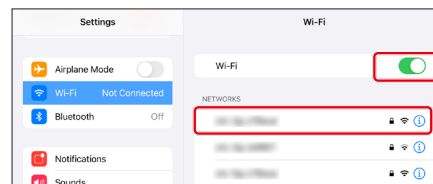
8. Press the [MENU] button to close the menu.

iPad

1. Connect your iPad via Wi-Fi (wireless LAN).

- 1 Turn Wi-Fi on in the Settings menu.

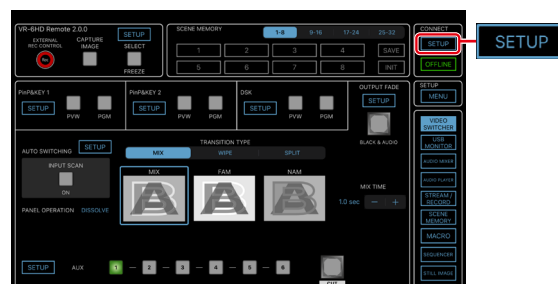
- 2 From the list of networks, tap the wireless LAN master device to which the VR-6HD is connected.



- 3 Enter the password listed on the wireless LAN master device, and tap "Connect".

2. Launch the VR-6HD Remote app.

3. Tap the CONNECT [SETUP] button.



4. Tap the [LAN] button.



5. Input the "IP ADDRESS" and "NETWORK PASSWORD" fields, and tap the [CONNECT] button.



IP ADDRESS

Input the IP address of the VR-6HD.
Check this by pressing the [MENU] button on the VR-6HD and selecting "INFORMATION" → "NETWORK INFORMATION".

NETWORK PASSWORD

Input the network password (four characters) set on the VR-6HD.

When the status icon changes to "LAN", the device is connected.