

# VR-6HD RCS

## Connection Guide

VR-6HD RCS is a program for remote control of the VR-6HD.

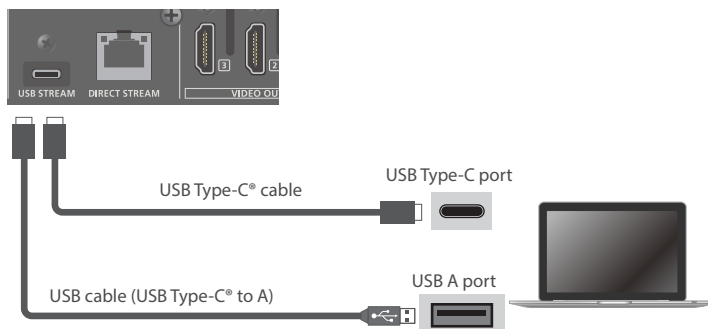
- \* The program runs on both Windows and Mac.
- \* This app is compatible with VR-6HD system program version 2.00 and later. Make sure that the system program of the VR-6HD is updated to the latest version.

- Roland is an either registered trademark or trademark of Roland Corporation in the United States and/or other countries.
- Company names and product names appearing in this document are registered trademarks or trademarks of their respective owners.

# USB Connection

This shows you how to use a USB cable to directly connect your computer to the VR-6HD.

## 1. Connect the computer to the USB STREAM port on the VR-6HD.



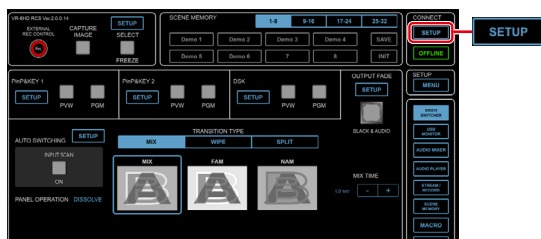
\* If you want to use the USB MONITOR function, connect with a USB 3.0 compatible cable.

## 2. Power-on the VR-6HD.

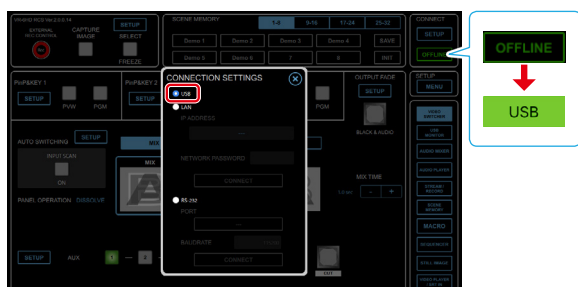
### Computer

## 1. Turn on the computer and launch VR-6HD RCS.

## 2. Click the CONNECT [SETUP] button.



## 3. Select the "USB".



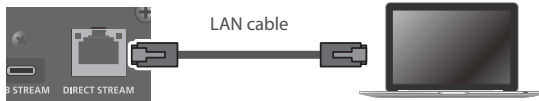
When the status icon changes to "USB", the device is connected.

# Connecting via LAN Cable

This shows you how to use a LAN cable to directly connect your computer to the VR-6HD.

## VR-6HD

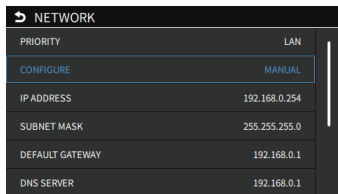
1. Using a LAN cable, connect the DIRECT STREAM port on the VR-6HD and the computer.



### Communication standards

Port	DIRECT STREAM port (LAN)
Protocol	TCP
Port number	8023

2. Power-on the VR-6HD.
3. [MENU] button → "NETWORK" → set "CONFIGURE" to "MANUAL", and press the [VALUE] knob.



4. Use the [VALUE] knob to select "NETWORK PASSWORD", and press the [VALUE] knob.

The NETWORK PASSWORD screen appears.

5. Set a network password (four characters).

Input the password that's set here when accessing the VR-6HD from VR-6HD RCS.

6. Use the [VALUE] knob to select "NETWORK INFORMATION", and press the [VALUE] knob.

The NETWORK INFORMATION screen appears.

When "CONNECTED" is shown in "LINK STATUS", the VR-6HD connection settings are finished.

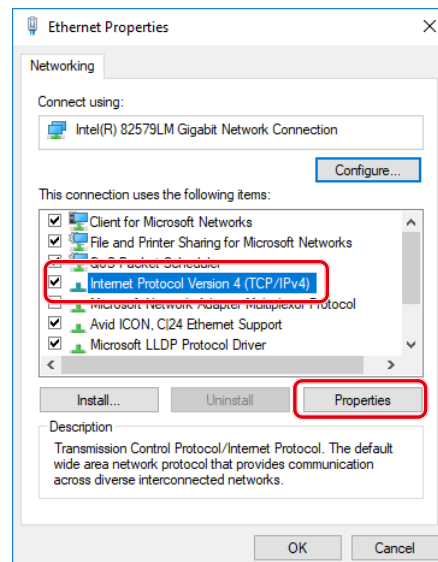
7. Press the [MENU] button to close the menu.

## Computer

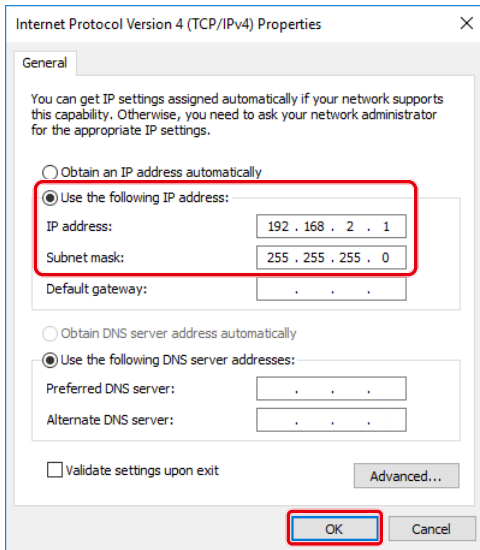
### Making the network settings on the computer

#### Windows

1. Working in sequence, click the [Start] button → "Settings" (gear icon).
2. Click "Network and Internet".
3. Click "Change Adapter Options".
4. Right-click the network connection you're using, then click "Properties".
5. Select "Internet Protocol Version 4 (TCP/IPv4)" and click the [Properties] button.



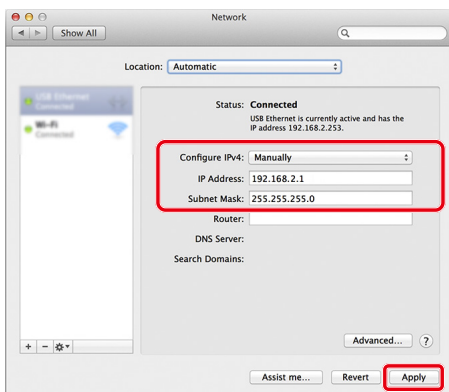
6. Select “Use the following IP address”, set the values for the IP address and subnet mask, then click the [OK] button.



Setting item	Setting
IP address	Set a value that does not conflict with the IP address of any other device connected to the network. Set this in accordance with the connected network.
Subnet mask	This sets the subnet mask. Set this in accordance with the connected network.

### Mac

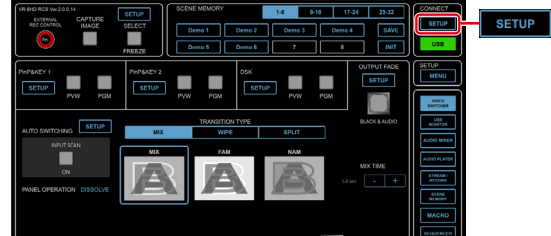
1. Display the Apple menu → “System Preferences” → “Network”.
2. From the list on the left, select the network connection service you’re using.
3. Set the values for the parameters shown below, then click the [Apply] button.



Setting item	Setting
Configure IPv4	Set to “Manually”.
IP Address	Set a value that does not conflict with the IP address of any other device connected to the network. Set this in accordance with the connected network.
Subnet Mask	This sets the subnet mask. Set this in accordance with the connected network.

## Settings the VR-6HD RCS app

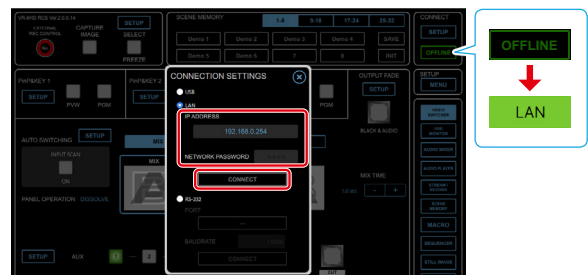
1. Launch the VR-6HD RCS app.
2. Click the CONNECT [SETUP] button.



3. Select the “LAN”.



4. Input the “IP ADDRESS” and “NETWORK PASSWORD” fields, and click the [CONNECT] button.

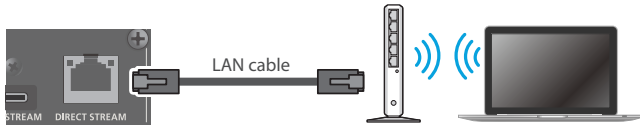


IP Address	Input the IP address of the VR-6HD. Check this by pressing the [MENU] button on the VR-6HD and selecting “NETWORK” → “NETWORK INFORMATION”.
Network Password	Input the network password (four characters) set on the VR-6HD.

When the status icon changes to “LAN”, the device is connected.

# Connecting via Wireless LAN (Wi-Fi)

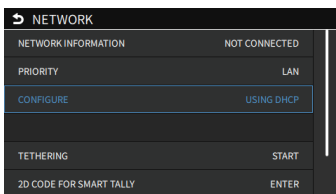
Connect the VR-6HD and your wireless LAN master device using a LAN cable, so that you can wirelessly connect to the iPad via the wireless LAN master device.



- \* See the Owner's Manual of the wireless LAN master device for how to use that device.
- \* The wireless LAN (Wi-Fi) connection speed and connectivity may be unstable in certain network environments.

## VR-6HD

1. Use a LAN cable to connect the LAN port on your wireless LAN master device to the DIRECT STREAM port on the VR-6HD.
2. Turn on the wireless LAN master device and enable DHCP server functionality on the wireless LAN master device.
3. Power-on the VR-6HD.
4. [MENU] button → "NETWORK" → set "CONFIGURE" to "USING DHCP", and press the [VALUE] knob.



The IP address, subnet mask, and default gateway are obtained automatically.

5. Use the [VALUE] knob to select "NETWORK PASSWORD", and press the [VALUE] knob.

The NETWORK PASSWORD screen appears.

6. Set a network password (four characters).

Input the password that's set here when accessing the VR-6HD from VR-6HD RCS.

7. Use the [VALUE] knob to select "NETWORK INFORMATION", and press the [VALUE] knob.

The NETWORK INFORMATION screen appears.

When "CONNECTED" is shown in "LINK STATUS", the VR-6HD connection settings are finished.

8. Press the [MENU] button to close the menu.

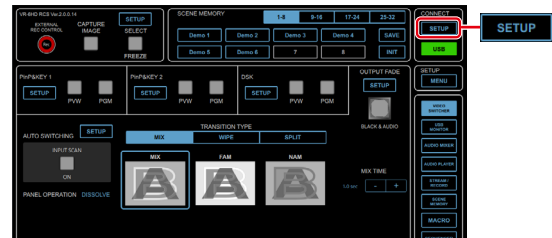
## Computer

1. Connect your computer via Wi-Fi (wireless LAN).

For more information on how to make connections, refer to the respective documentation for the computer and the Wi-Fi router you're using.

2. Launch the VR-6HD RCS app.

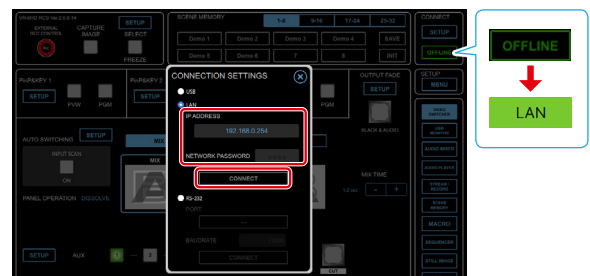
3. Click the CONNECT [SETUP] button.



4. Select the "LAN".



5. Input the "IP ADDRESS" and "NETWORK PASSWORD" fields, and click the [CONNECT] button.



IP Address	Input the IP address of the VR-6HD. Check this by pressing the [MENU] button on the VR-6HD and selecting "NETWORK" → "NETWORK INFORMATION".
Network Password	Input the network password (four characters) set on the VR-6HD.

When the status icon changes to "LAN", the device is connected.

# Connection Using RS-232

This shows you how to use an RS-232 cable to directly connect your computer to the VR-6HD.

## VR-6HD

1. Using an RS-232 cable, connect the RS-232 connector on the VR-6HD to the computer.



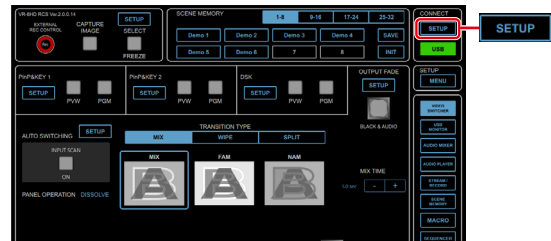
### Communication standards

Communication method	Synchronous (asynchronous), full-duplex
Communication speed	115,200 bps
Parity	none
Data length	8 bits
Stop bit	1 bit
Code set	ASCII
Flow control	XON/XOFF

2. Turn on the power to the VR-6HD.

## Computer

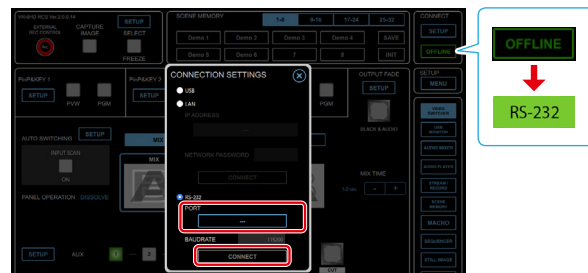
1. Launch the VR-6HD RCS app.
2. Click the CONNECT [SETUP] button.



3. Select the "RS-232".



4. Select the "PORT", and click the [CONNECT] button.



### PORT

From the drop-down list, select the port where the VR-6HD is connected.

When the status icon changes to "RS-232", the device is connected.

# Using a MIDI Controller for Operation

You can connect a MIDI controller to your computer, and use the MIDI controller to control VR-6HD RCS. You can use the MIDI controller to directly control HDMI input and music file volume that otherwise would be controlled via a menu.

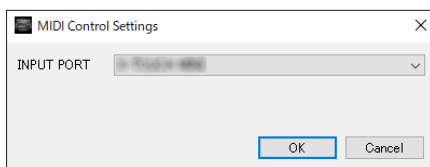
## Connecting a MIDI controller

1. Using a USB cable, connect your MIDI controller to the computer that is running VR-6HD RCS.



\* Some MIDI controllers might require a dedicated USB-MIDI driver.

2. From the VR-6HD RCS menu bar, choose "MIDI Control" → "MIDI Control Settings".  
The MIDI Control Settings window appears.



3. In the MIDI Control Settings window, in "INPUT PORT", choose the MIDI controller that's connected to the computer, and click the [OK] button.

This completes the connection between VR-6HD RCS and the MIDI controller.

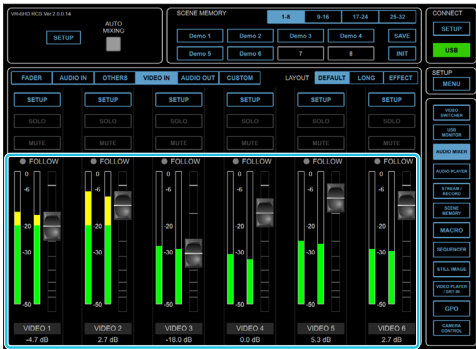
## Assigning MIDI controller operations to VR-6HD RCS (MIDI mapping)

Here's how to assign (map) the MIDI controller to the buttons, knobs, and faders that are shown in the Audio Mixer screen.

\* VR-6HD RCS receives the following MIDI messages regardless of the MIDI controller's channel settings.

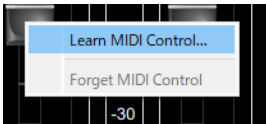
### AUDIO MIXER screen

When you click the [AUDIO MIXER] button, the AUDIO MIXER screen appears.



Buttons, Faders	MIDI messages
[SOLO] buttons	Control Change: 0–119 (0–63: OFF, 64–127: ON)
[MUTE] buttons	Note On (switch on/off each time the message is received)
Faders	Control Change: 0–119 (0–127)

1. Right-click the button, knob, or fader that you want to map, and from the popup menu choose “Learn MIDI Control”.



The message “Waiting for MIDI message” appears.

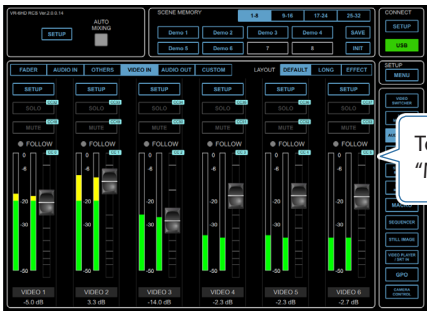
2. Operate a button or knob of your MIDI controller.

When the corresponding button or knob in VR-6HD RCS operates, mapping is complete.

### MEMO

- **Viewing the MIDI mapping**

You can check the mapped MIDI messages by viewing them in the screen. From the menu bar, choose “MIDI Control” → “Show MIDI Control Mapping”.



- **Deleting MIDI mapping**

To delete an individual MIDI mapping, right-click a mapped button or knob, and from the popup menu choose “Forget MIDI Control”. To delete all MIDI mappings, from the menu bar choose “MIDI Control” → “Clear MIDI Control Mapping”.

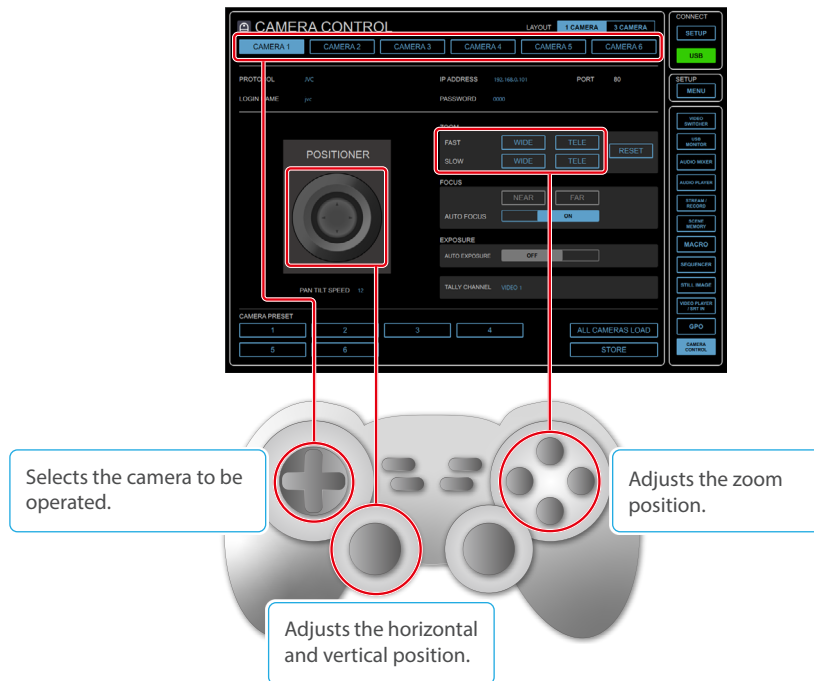


# Using a Game Controller to Control PTZ Camera

You can connect a commercially available game controller to your computer, and use the game controller to control PTZ camera.

## CAMERA CONTROL screen

When you click the [CAMERA] button, the CAMERA CONTROL screen appears.



\* The location of the buttons mapped to ZOOM differs depending on the manufacturer of the controller.