

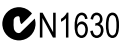


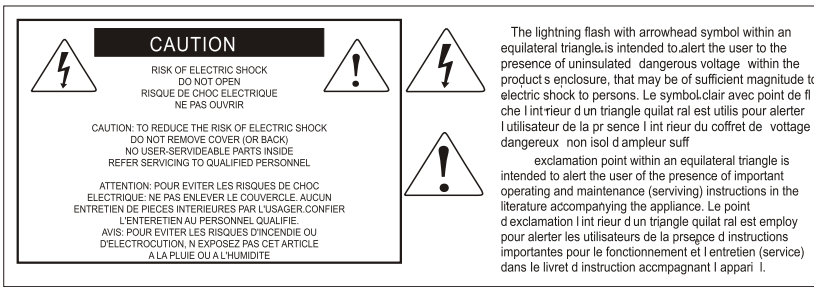
# PLATFORM-M+

MIDI/Audio control surface with motorized faders



User manual





## ***Important Safety Instructions***

1. Read this manual thoroughly before using this unit.
2. Keep this manual for future reference.
3. Take notice of and comply with all warnings included in the user's manual or indicated on the appliance.
4. Follow all instructions included in this manual.
5. Do not expose this unit to rain or moisture. Avoid having water or other liquids spilled on this unit.
6. When cleaning the cabinet or other parts of this appliance, use only a dry or slightly damp soft cloth.
7. Do not block any ventilation openings or interfere with the proper ventilation of this unit. Install in accordance with the manufacturer's instructions.
8. Do not use or store near any heat sources such as radiators, heat registers, stoves, or other heat-producing appliances.
9. Do not interfere with the safety purpose of the polarized or grounding-type plug. A polarized plug has two blades with one wider than the other. A grounding-type plug has two blades and a third grounding prong. These are designated for your safety. If the provided plug does not fit into your outlet, consult an electrician.
10. Protect the power cord from being walked on or otherwise damaged by items placed on or against them. Particular attention should be given to the plugs, receptacles, and the point where the cord exits the appliance.
11. To avoid the risk of electrical shock, do not touch any exposed wiring while the unit is in operation.
12. Only use attachments/accessories specified by the manufacturer.
13. Unplug this unit and all connected electrical equipment during lightning storms or when left unused a long period of time.
14. Refer all servicing to qualified service personnel. Servicing is required when the appliance has been damaged in any way or fails to operate normally.

**WARNING: To reduce the risk of fire or electric shock, do not expose this unit to rain or moisture**

# Contents

Introduction .....	4
What's in the package? .....	4
Features .....	5
Layout Deckplatte .....	6
Rear Panel Layout .....	8
Getting Started .....	9
Connecting Your Platform M+ Controller .....	9
(Expander ~ use with Platform X+).....	10
Cubase .....	13
Ableton Live.....	15
Logic Pro .....	16
Samplitude.....	18
Pro Tools.....	20
(Standalone).....	22
Cubase .....	22
Nuendo.....	23
Logic Pro .....	24
Samplitude.....	25
Bitwig .....	27
Reason .....	28
Reaper.....	29
Studio One.....	30
Ableton Live.....	31
Pro Tools.....	32
iMap™ Software for Mac OS X.....	34
Installing iMap™ Software for Windows.....	35
Assigning DAW mode (Mackie Control/HUI) or self define MIDI functions with iMap™ .....	37
Assigning DAW mode (Mackie control/HUI) with iMap™ .....	38
Assigning MIDI message with User Define mode at iMap™ .....	40
Control element setup at User defines mode .....	42
Other Functions in iMap™ .....	44
Firmware upgrade .....	45
Restore the factory default settings .....	49
Connecting expansion modules .....	49
Specifications .....	50
Services .....	51

# Introduction

Thank you for purchasing the ICON Platform M+ Midi/Audio control surface. We sincerely trust this product will provide years of satisfactory service, but if anything is not to your complete satisfaction, we will endeavor to make things right.

In these pages, you'll find a detailed description of the features of the Platform M+, as well as a guided tour through its front and rear panels, step-by-step instructions for its setup and use, and full specifications.

You'll also find a warranty card enclosed---please don't forget to fill it out and mail it so that you can receive online technical support at: **www. iconproaudio. com**. And

so we can send you updated information about this and other ICON products in the future. As with most electronic devices, we strongly recommend you retain the original packaging. In the unlikely event the product must be returned for servicing, the original packaging (or reasonable equivalent) is required.

With proper care and adequate air circulation, your Platform M+ will operate without any trouble for many years. We recommend that you record your serial number in the space provided below for future reference.

Please write your serial number here for future reference:

Purchased at:

Date of purchase:

## What's in the package?

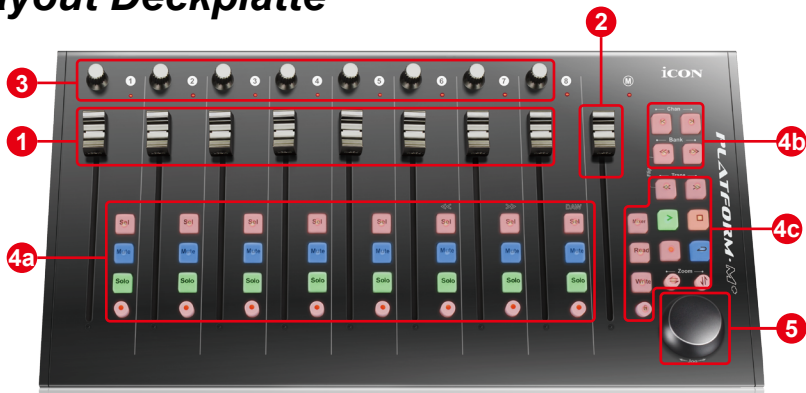
- Platform M+ USB-MIDI Controller x 1pc
- CD x 1
- App software – iMap (Mac & Windows)
- User manual & QSG
- DAW software
- Quick Start Guide x 1
- USB2.0 Cable x 1
- AC adaptor x 1pc

# Features



- Extremely compact, durable and versatile
- Customize the perfect setup with a variety of Platform extension modules
- 8+1 touch-sensitive motorized faders with 10-bit resolution
- 8 dual-functions encoder knobs (Rotate and enter)
- Jog wheel shuttle for fast search and control
- Illuminated buttons for each channel including Sel, Mute, Solo and Record
- 6 illuminated transport buttons including Play, Stop, Rec, Rewind, Fast forward and Loop
- Illuminated “Zoom” buttons with 2 directional keys (Left/Right & Up/Down) used in combination with the jog wheel
- 2 illuminated “Track” buttons for easy selection of different channels
- 2 illuminated “Bank” buttons for shifting 8-channels
- 3 x Extension ports equipped for extension modules
- Universal Mackie Control and HUI DAW remote control for studio & live applications.
- Supports HUI and Mackie Control protocols for seamless intergartion with every compatible music production software
- iMap™ software included for easy mapping of MIDI functions
- Firmware upgrade available simply via USB connection and iMap software
- Class-compliant with Windows XP, Vista (32-bit & 64-bit), Windows 7/8/10 (32-bit & 64-bit) and Mac OS X (IntelMac)
- USB 2. 0 high speed connectivity
- Superior build quality and robust metal casing with Kensington lock port
- 12V/2. 5A power adapter included

# Layout Deckplatte



**Note:** Function operates slightly difference between DAWs. Please refer to your DAW manual for each function. The following description is based on the functions that operate in Apple Logic Pro.

## 1. Channel faders

The eight 100mm motorized faders are generally used for controlling the track volume of your DAW. They are all touch sensitive to allow override automation the moment you touch a fader. Also, they are motorized; they will automatically move to reflect the current level of the selected channels in your DAW application. Any automation recorded in a project will be reflected by the fader positions.

## 2. Master fader

This 100mm motorized fader operates the same as the other 8 faders. It controls your DAW software's master channel fader.

**Note:** *Except Pro Tools – Pro Tools software is designed in such a way that the fader next to your last channel fader always acts as the master channel fader.*

## 3. Knobs

The eight rotary encoder knobs are generally used for controlling the track pan position, aux send levels and EQ of your DAW. You may also preset them to adjust specific parameters within plug-ins and virtual instruments.

## 4. Control buttons

### 4a) Recording channel control buttons section

**REC buttons** - Activate and deactivate the recording state of the associated channel. The switch will light red when the channel is armed.

**SOLO buttons** - Turn On and Off the solo state of the associated channel. The switch will light red when the channel solo state is on and other channels will be muted. You could solo multiple channel by pressing SOLO buttons on additional channels.

**MUTE buttons** - Activate and deactivate the mute state of the associated channel. The switch will light red when the channel is muted.

**SEL buttons** - The SEL buttons activate the associated channels in the DAW software in order to perform a specific operation (for example, when adjusting EQ with the ASSIGNABLE ENCODERS, the SEL switch will be used to choose the channel you want to adjust). When a channel is selected, the associated SEL switch's red LED will light up.

#### 4b) Motorized fader control buttons section

<b>Chan &lt; button</b> -	Shift “one” channel up for all faders (except the master channel).
<b>Chan &gt; button</b> -	Shift “one” channel down for all faders (except the master channel).
<b>BANK &lt; button</b> -	Shift “eight” channels up for all faders (except the master channel).
<b>BANK &gt; button</b> -	Shift “eight” channels down for all faders (except the master channel).

#### 4c) Transport and Zoom control buttons section

<b>PLAY button</b> -	Activate the play function of the DAW.
<b>STOP button</b> -	Activate the stop function of the DAW.
<b>REC button</b> -	Activate the record function of the DAW.
<b>REWIND button</b> -	Activate the rewind function of the DAW.
<b>FAST FORWARD button</b> -	Activate the fast forward function of the DAW.
<b>LOOP button</b> -	Activate the loop function of the DAW.
<b>Zoom L/R button</b> -	Zoom in horizontally to the Graphical User Interface (GUI) of the DAW application. Activate the button and rotate the jog wheel to zoom in and out.
<b>Zoom U/D button</b> -	Zoom in vertically to the Graphical User Interface (GUI) of the DAW application. Activate the button and rotate the jog wheel to zoom in and out.
<b>READ button</b> -	Press the READ button to activate the read function of the current audio track.
<b>WRITE button</b> -	Press the WRITE button to activate the write function of the current audio track.
<b>LOCK button</b> -	Activate to lock all motorized faders.

**MIXER button** -

DAW	Function
Logic Pro, Samplitude, Reaper, Studio One, Bitwig Studio, Sonar	Marker
Nuendo/Cubase, Live, Reason	Left
FL Studio	Shift
Audition	Play
DP	RTZ

## 5. Jog wheel

The jog wheel is used for various purposes specific to the DAW application, including shuttle and scrubbing functions.

# Rear Panel Layout



## 1. USB port

Functions as a MIDI port to your notebook (or computer) and compatible software.

## 2. Extension ports

These extension ports are equipped for connecting dedicated Platform series control module such as Platform B (button module).

## 3. Platform D / D2 LCD module port

Connect the Platform D / D2 to this port with the provided cable.



# Getting Started

## Connecting Your Platform M+ Controller



### 2 Connect the Platform M+ to your Mac/PC via the USB port

Choose a USB port on your Mac/PC and insert the wide (flat) end of the USB cable. Connect the cable's other end to the Platform M+. Your Mac/PC should automatically "detect" the new hardware and notify you that it is ready to use.

### 4 Select the DAW at Platform M+.

Press << (channel 6's "Sel" button)/>> (channel 7's "Sel" button) to scroll through the control-mode list, and then press the "DAW" (channel 8's "Sel" button) button to make the selection.

The control-mode name will display on the LCD while you are scrolling through the list to make the selection if Platform D / Platform D2 (optional) is installed.

Otherwise, the 9 channel's LED indicator lights located on the top will indicate the DAW. The sequence is as follows:

Channel 1 LED: MCP (Nuendo / Cubase / Samplitude / Ableton Live / Reaper / Studio One / Reason / Bitwig / Sonar / Audition / FL Studio / Digital Performer)

Channel 2 LED: Logic Pro

Channel 3 LED: HUI (Pro Tools)

Channel 4 LED: User define

**Tip:** Platform M+ will memorise your last selected DAW mode and re-enter the same mode a few seconds after it has been switched on. (i. e. DAW mode selection is not needed if the last mode is being used. )

### 5. Setup your DAW

Activate the ICON Platform M+ controller in your DAW or MIDI software using "MIDI Setup" or "MIDI Devices".

For LogicPro, Cubase/Nuendo, Samplitude, Ableton Live, Reaper, Studio One, Reason, Bitwig, Sonar, Audition, FL Studio, Digital Performer select Mackie Control.

For Pro Tools select HUI

**(Tip:** You may also refer to our website at [www.iconproaudio.com](http://www.iconproaudio.com), at each controller (Platform M+) product page's "Setup demo" section for different DAW set up illustrations.

For DAW that not on our setup demo list, please refer to your software user manual for the hardware setup. )

# (Expander ~ use with Platform X+)



Platform M\*

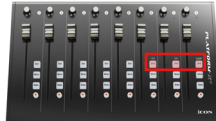
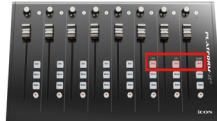
Platform X\* (X+1)

Platform X\* (X+2)

Platform X\* (X+3)



+



or

Platform X\* (X+3)

Platform X\* (X+2)

Platform X\* (X+1)

Platform M\*



+



# 1 Platform M+



Channel 1 LED: MCP  
 Channel 2 LED: Logic Pro  
 Channel 3 LED: HUI  
 Channel 4 LED: User define

MCP Mode Selected

- Cubase/Nuendo
- Samplitude
- Bitwig
- Reason
- Digital Performer
- FL Studio
- Reaper
- Sonar
- Audition
- Studio One
- Live

Logic Pro Mode Selected

LogicPro

HUI Mode Selected

ProTools

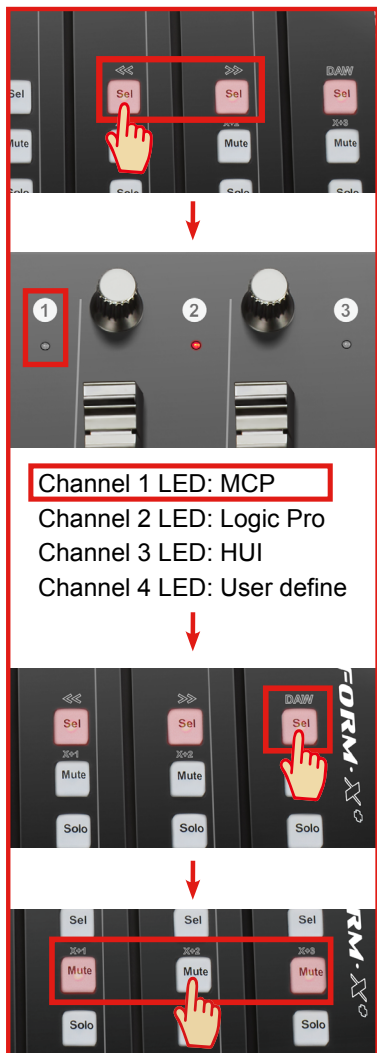
# 2 Platform X+ (X+1)



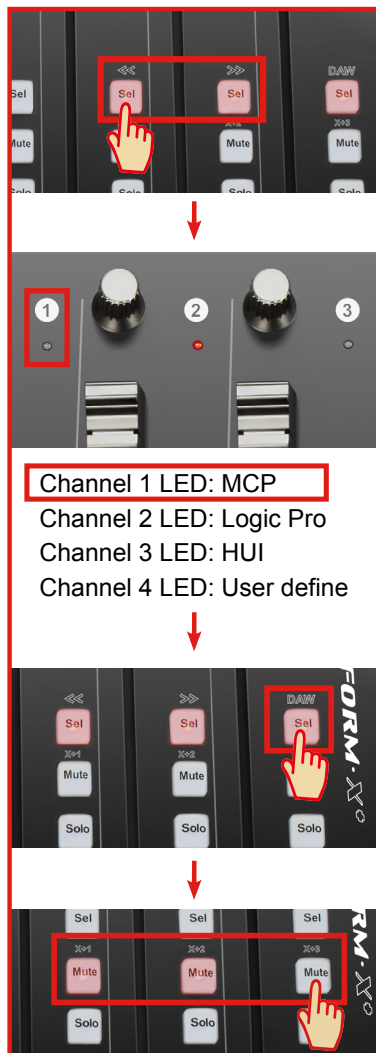
Channel 1 LED: MCP  
 Channel 2 LED: Logic Pro  
 Channel 3 LED: HUI  
 Channel 4 LED: User define



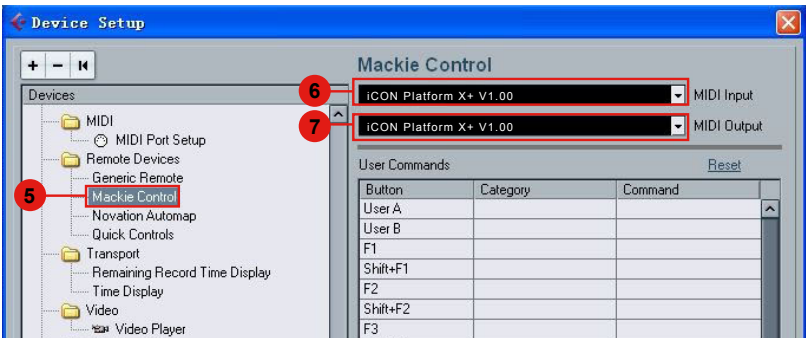
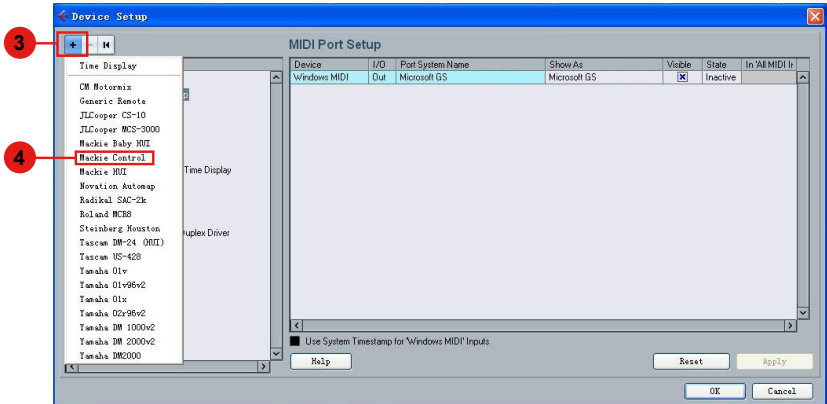
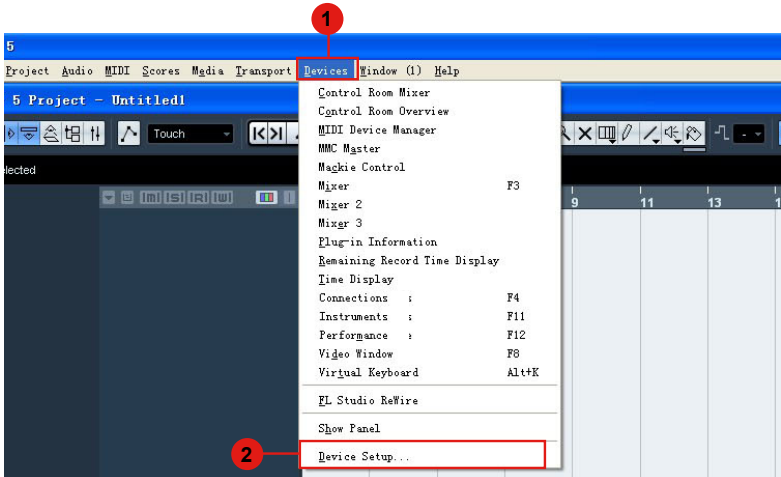
### 3 Platform X+ (X+2)

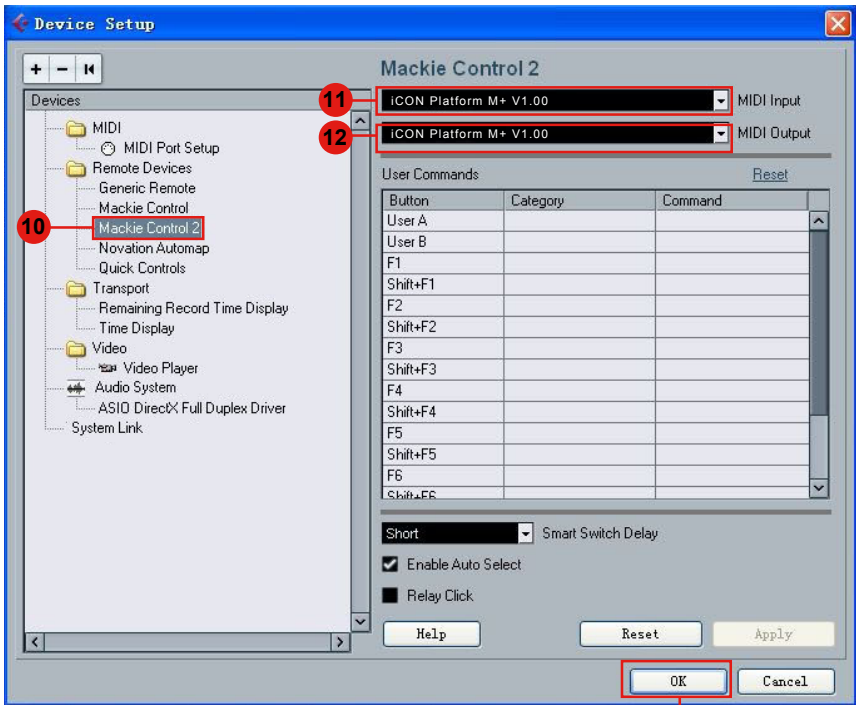
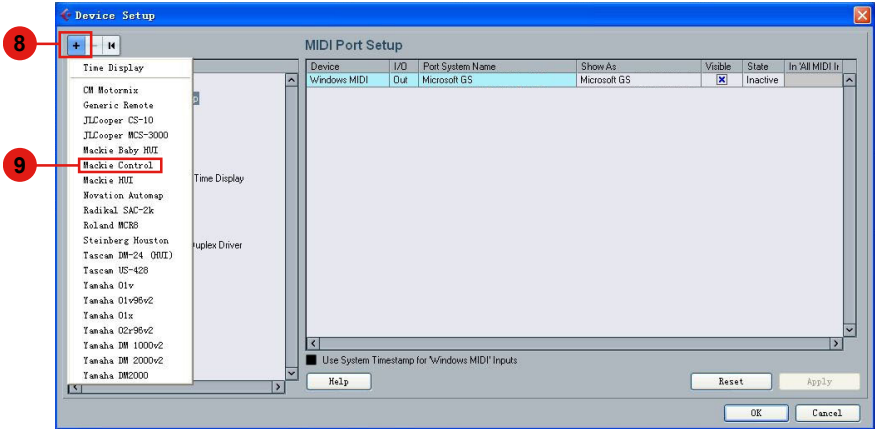


### 4 Platform X+ (X+3)

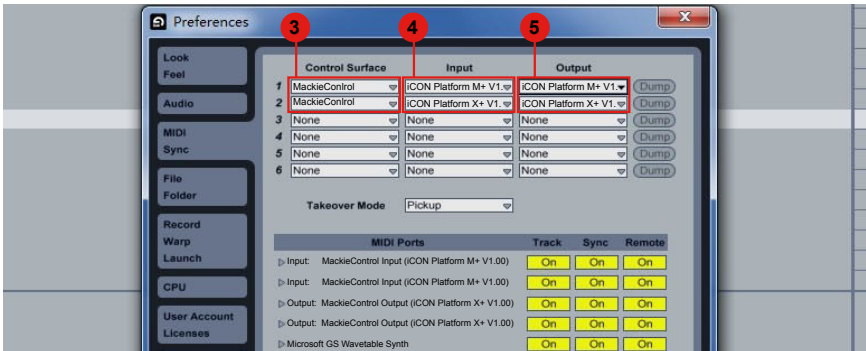
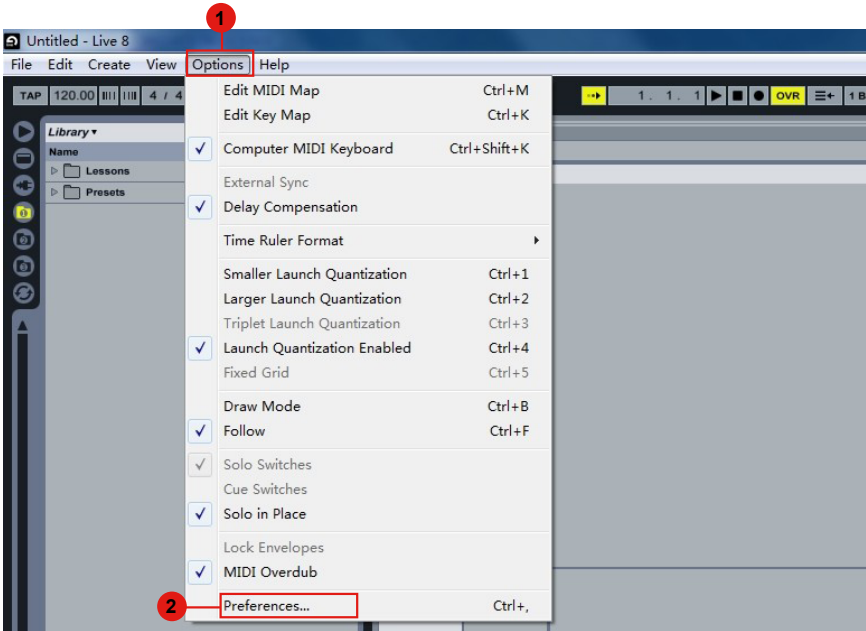


# Cubase

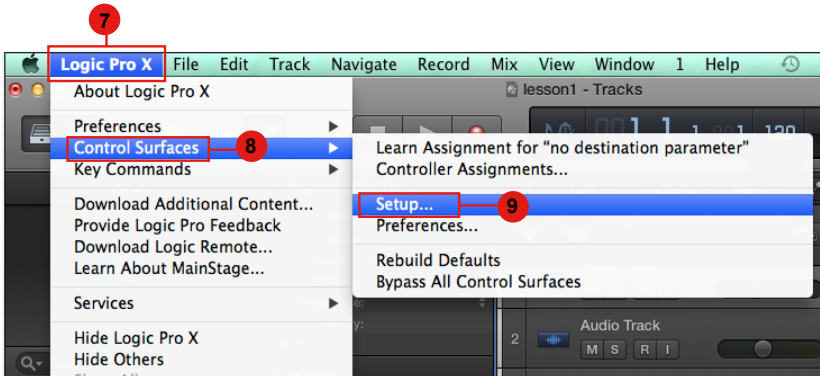
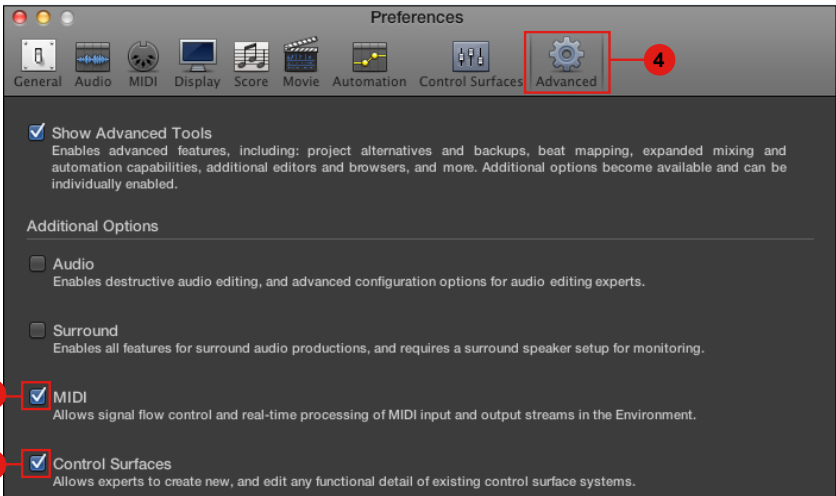
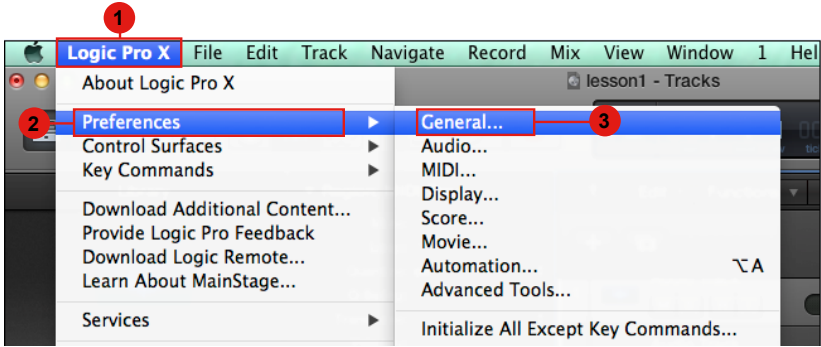




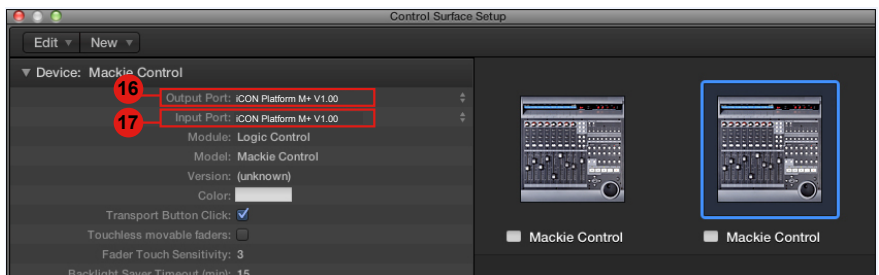
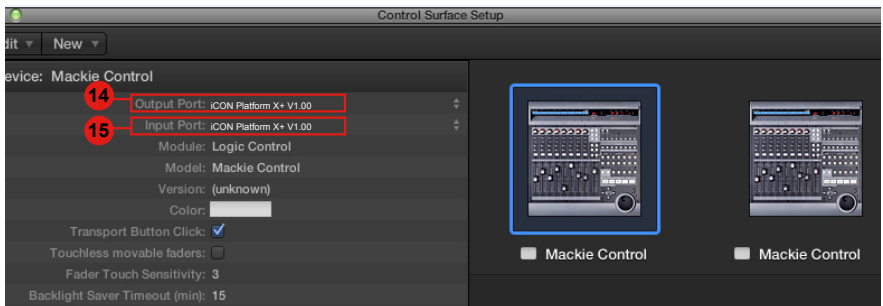
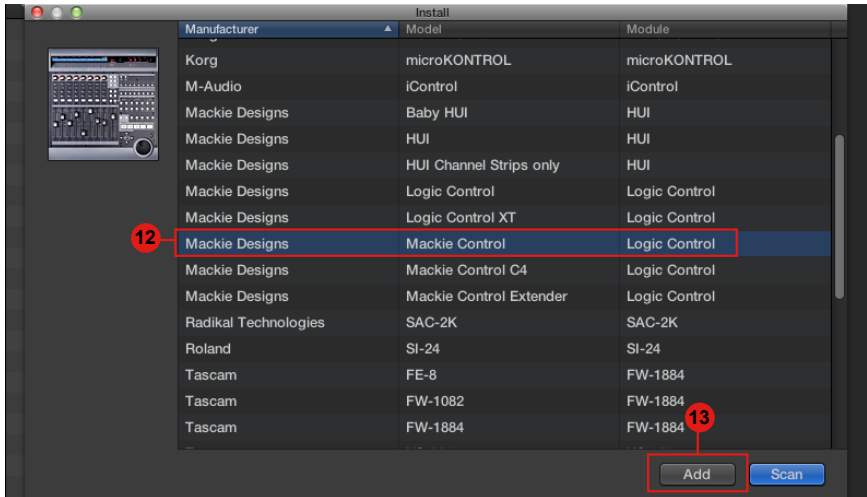
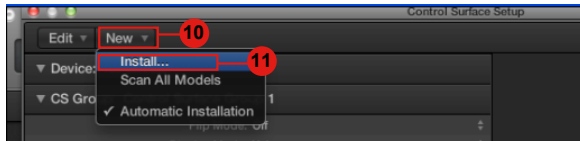
# Ableton Live



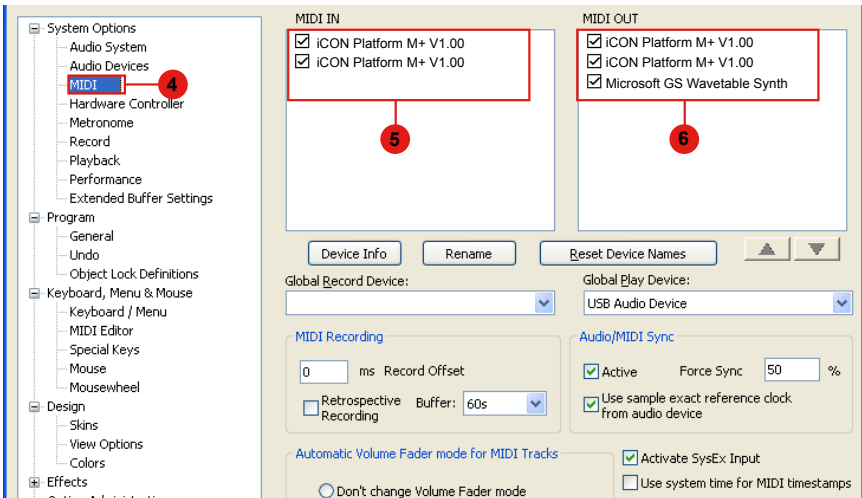
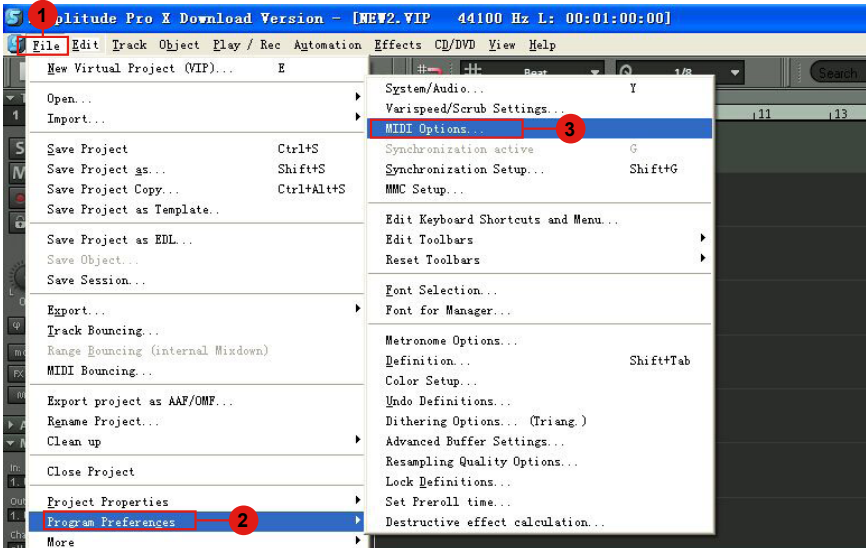
# Logic Pro

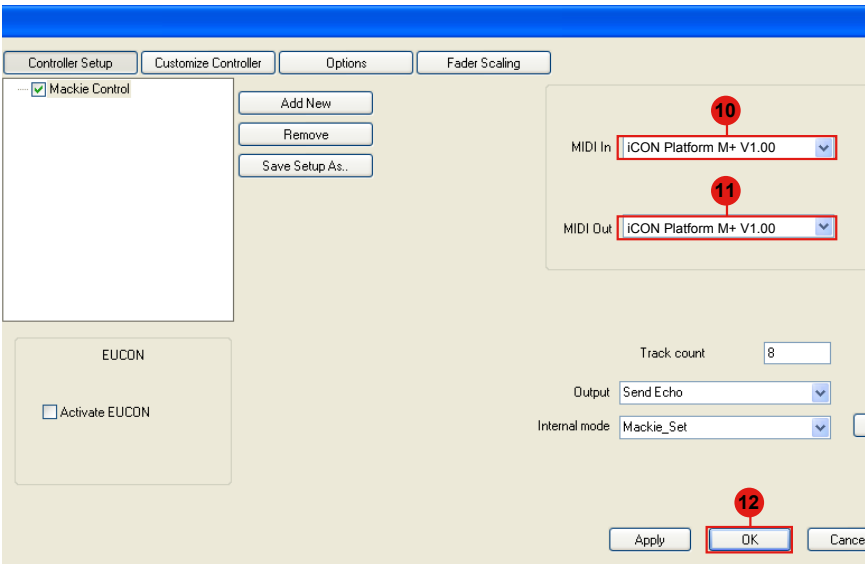
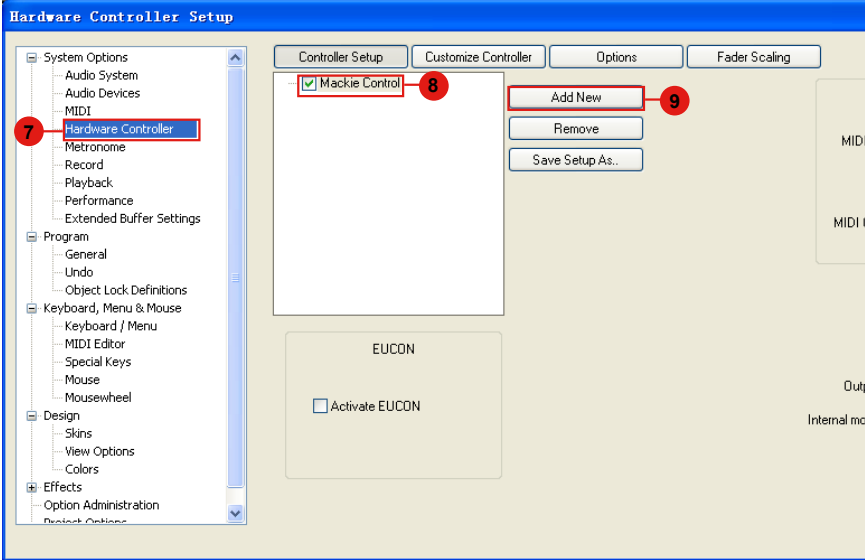




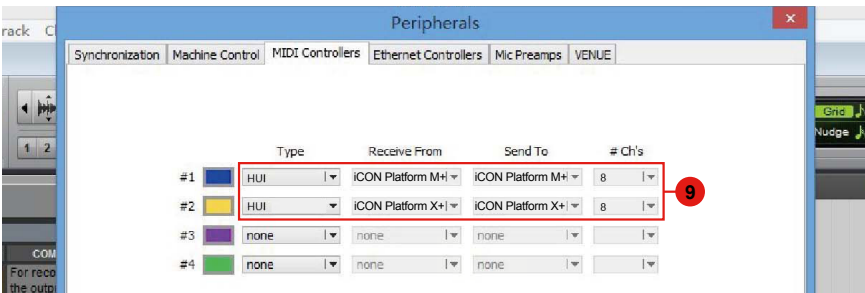
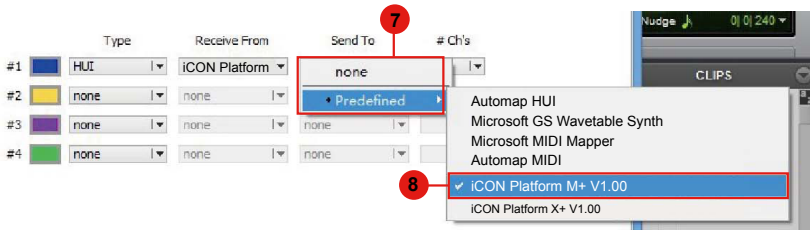
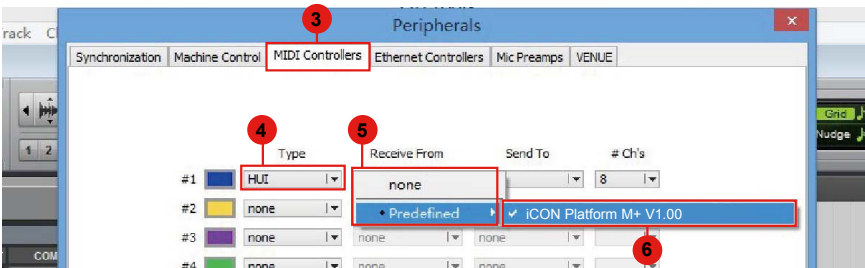
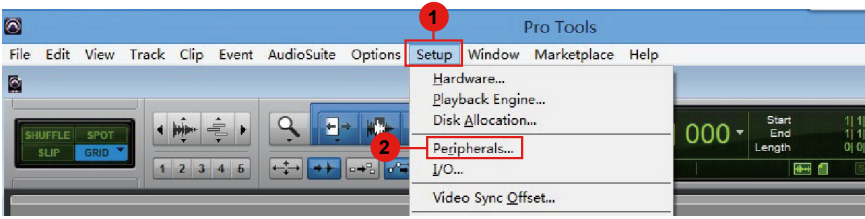


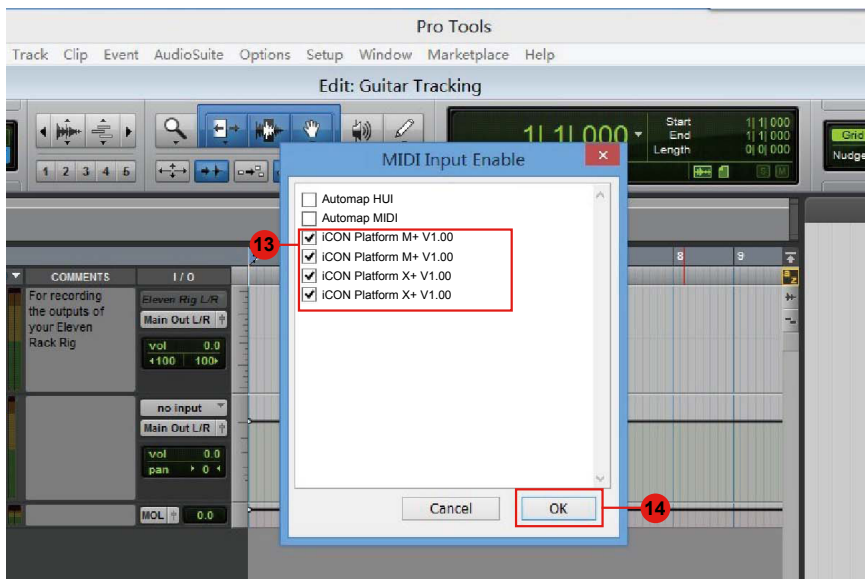
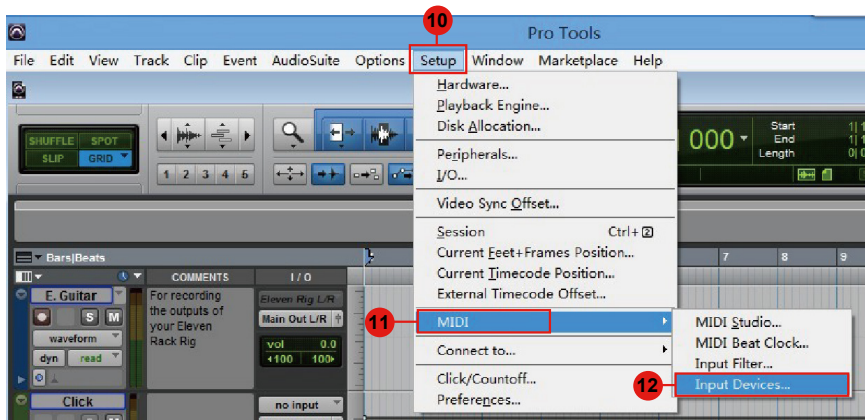
# Samplitude





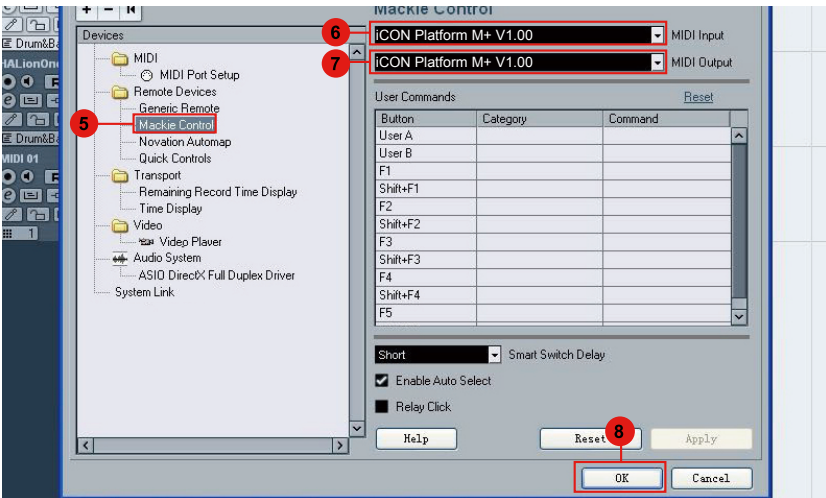
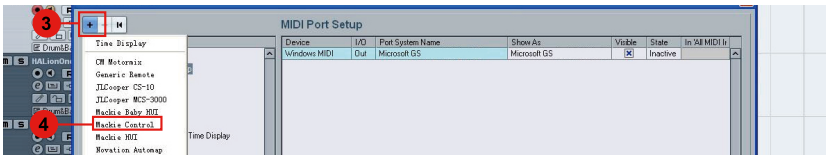
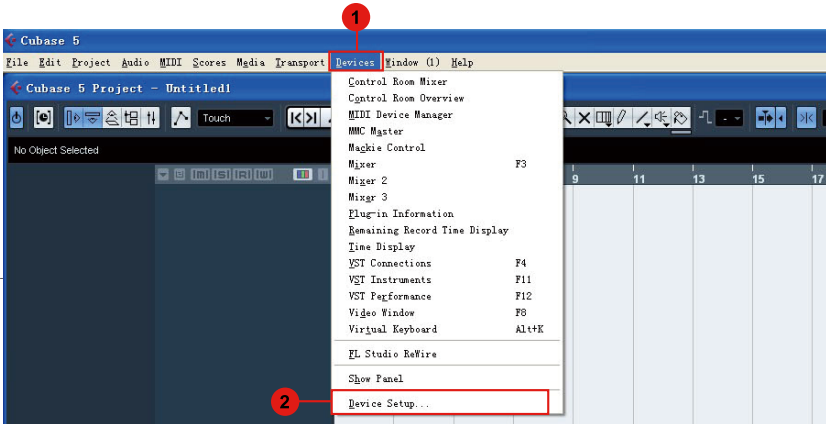
# Pro Tools



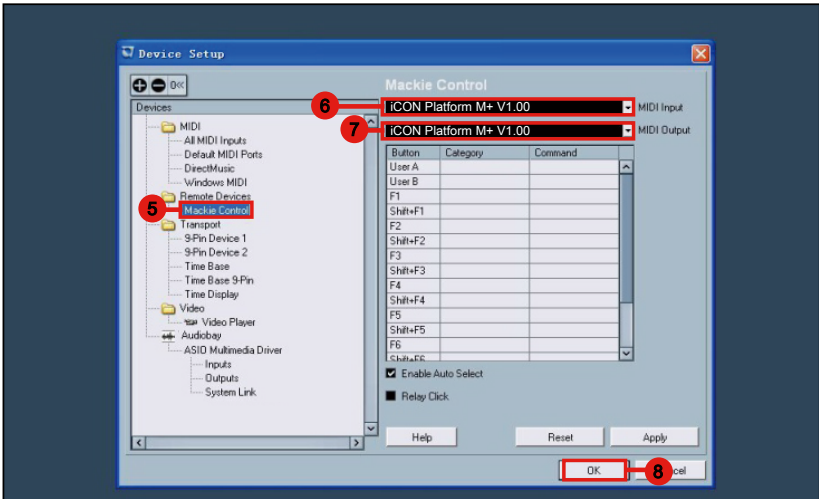
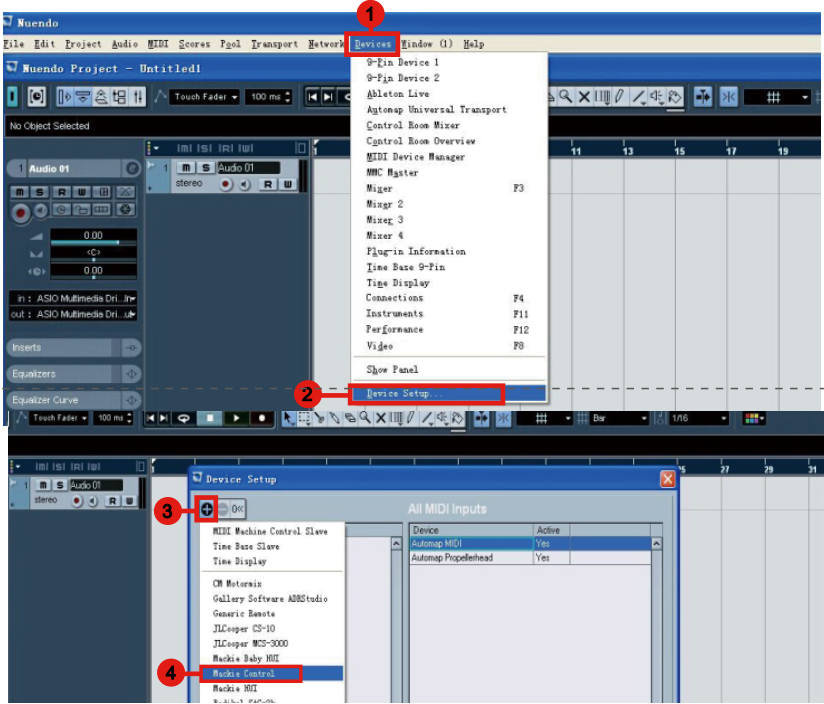


# (Standalone)

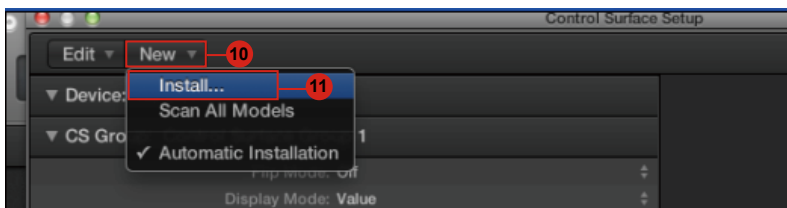
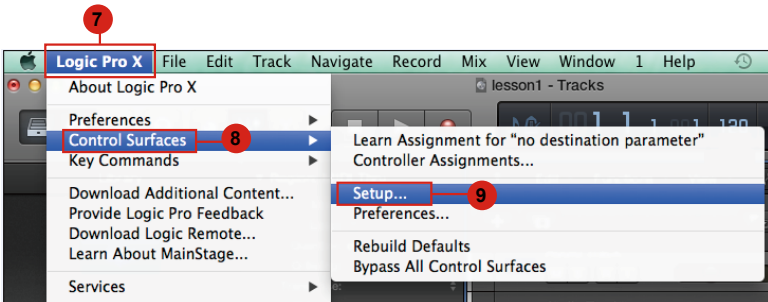
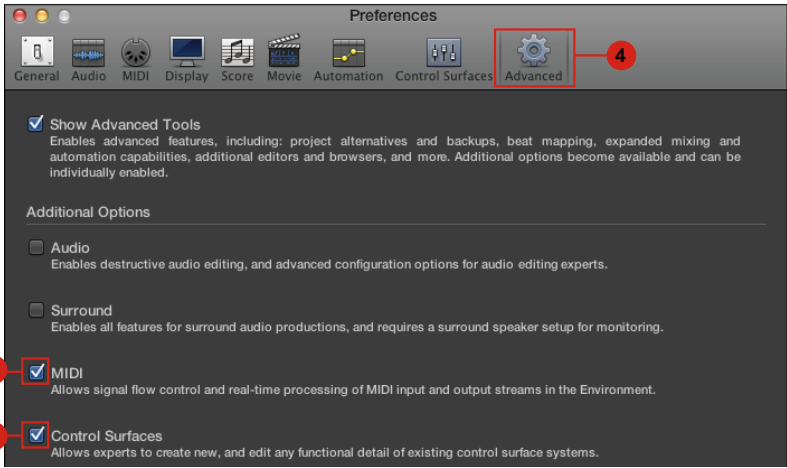
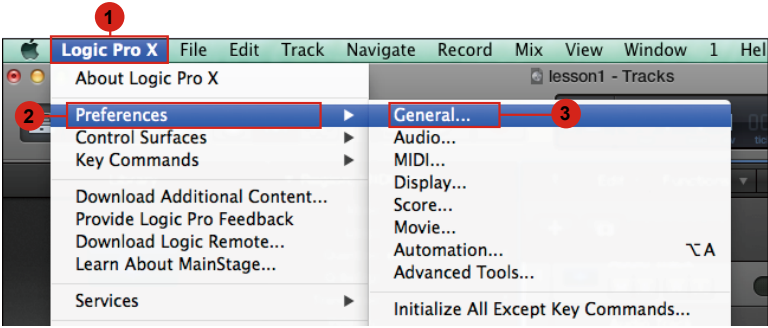
## Cubase



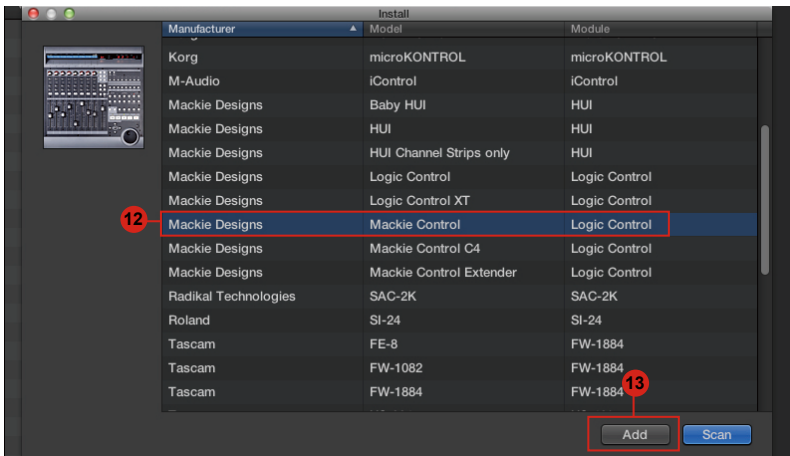
# Nuendo



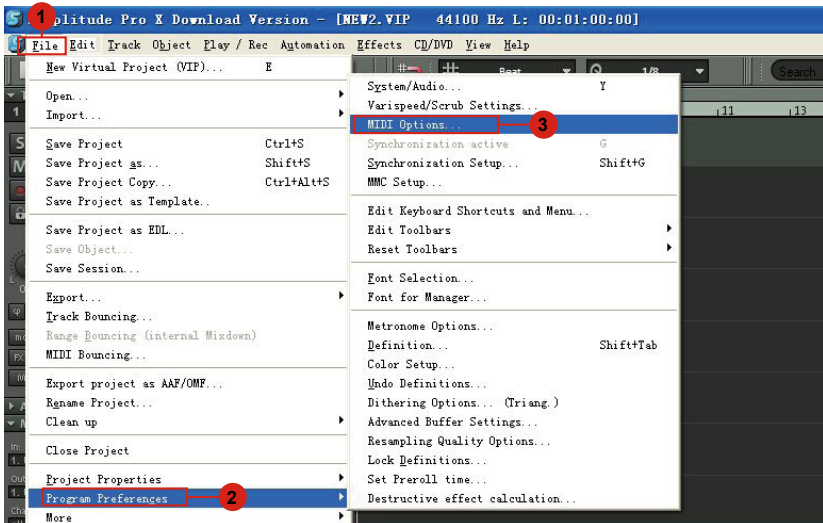
# Logic Pro

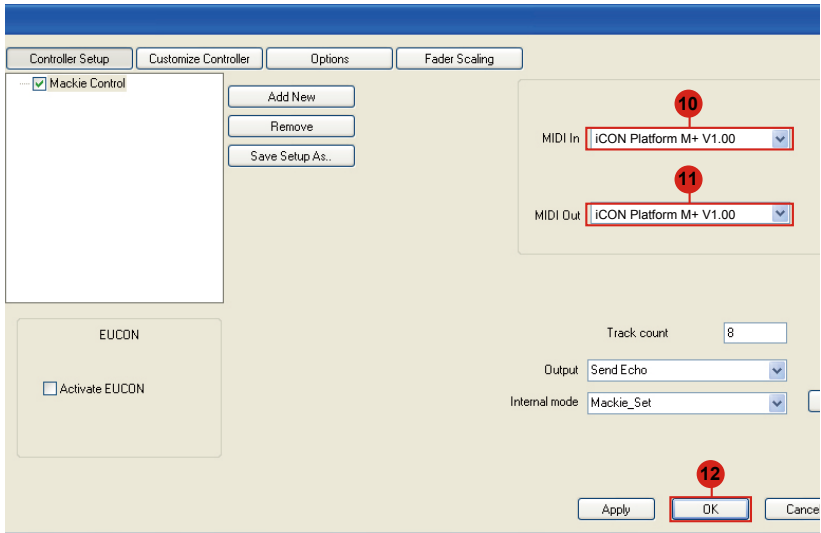
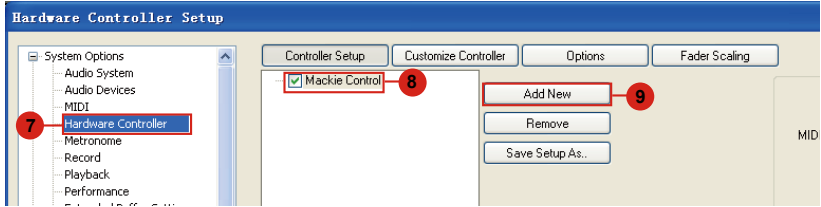
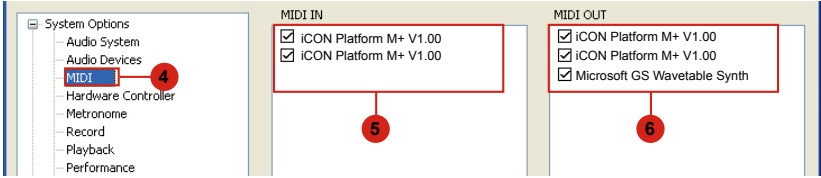


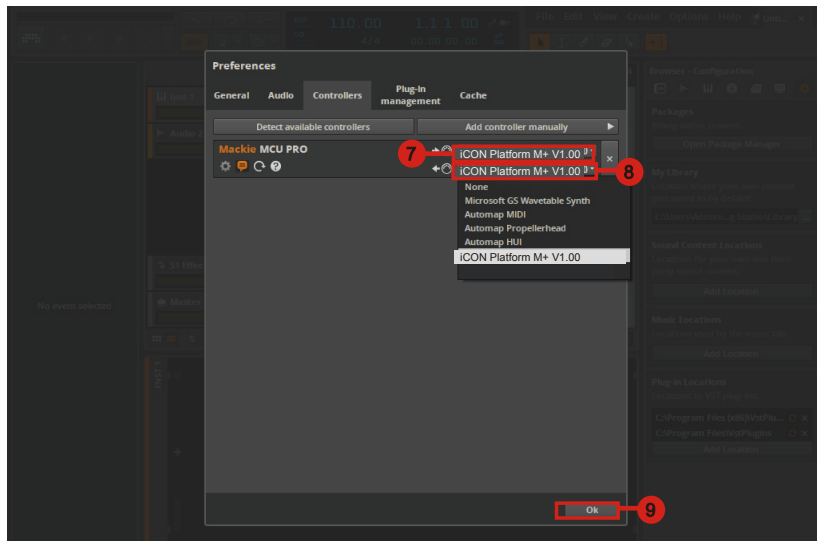
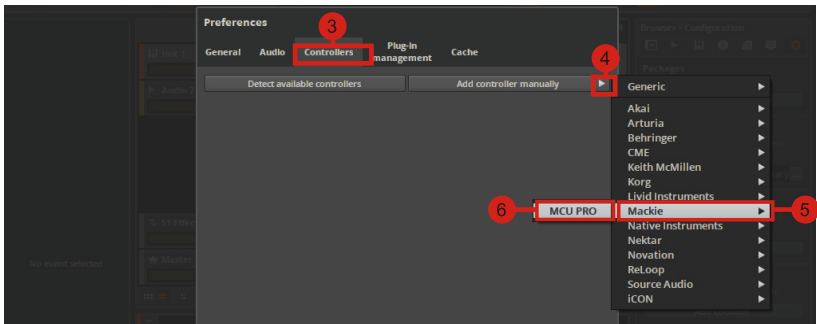
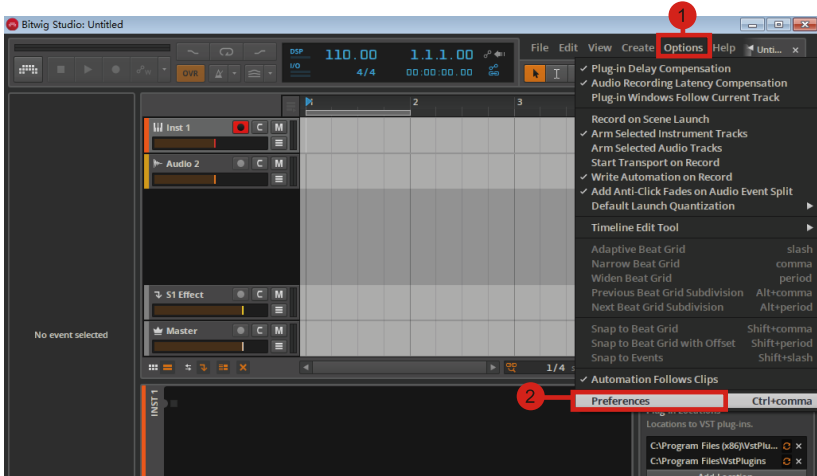




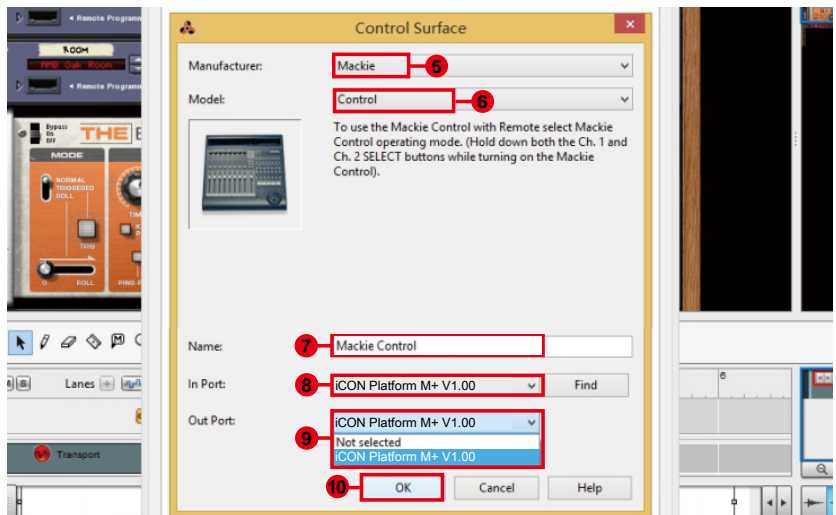
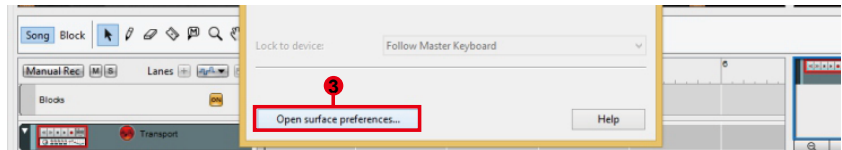
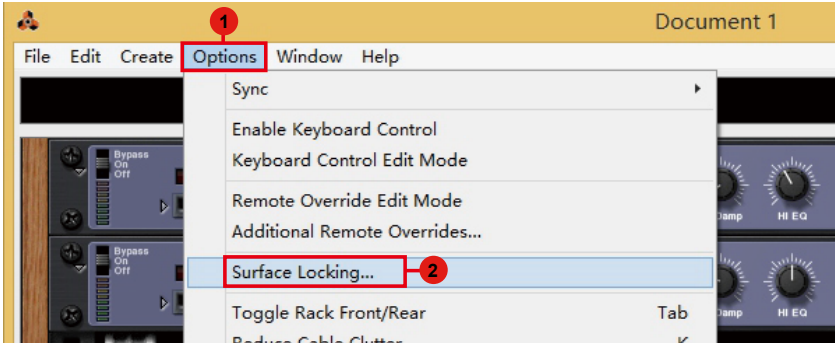
## Samplitude



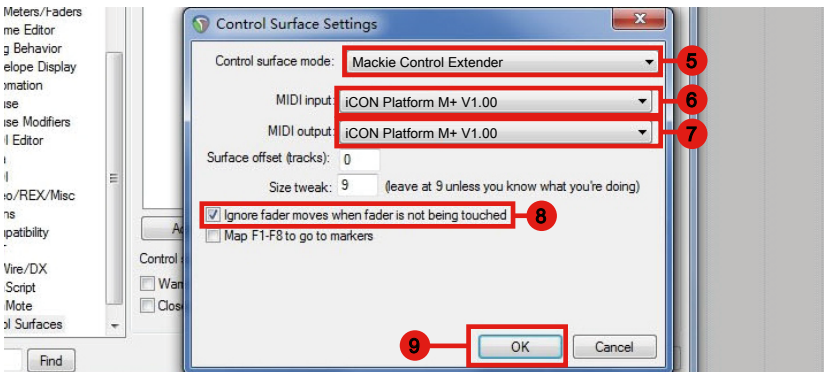
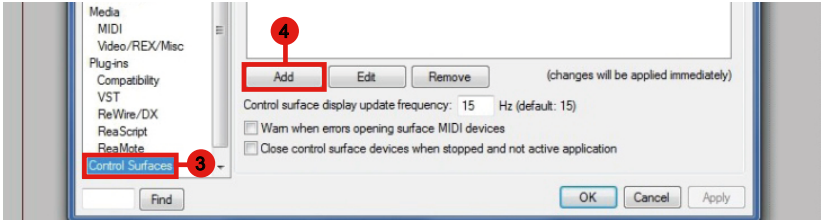
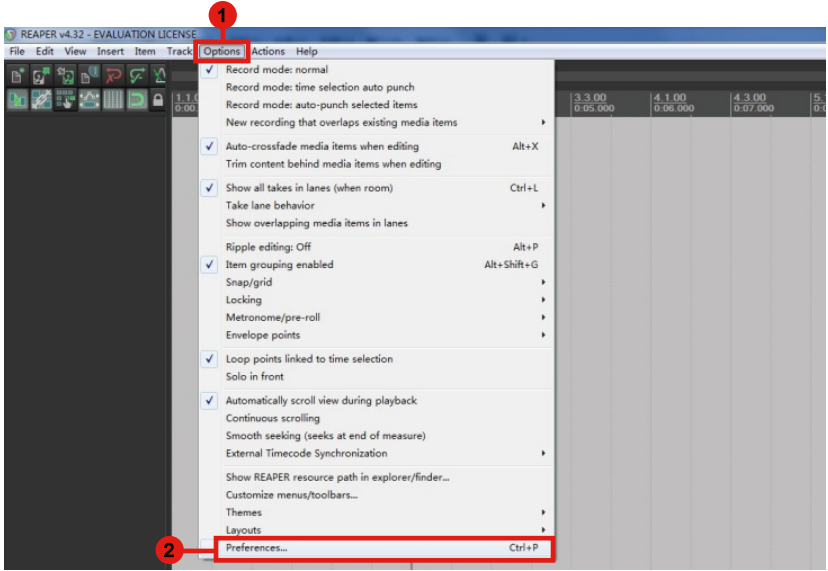




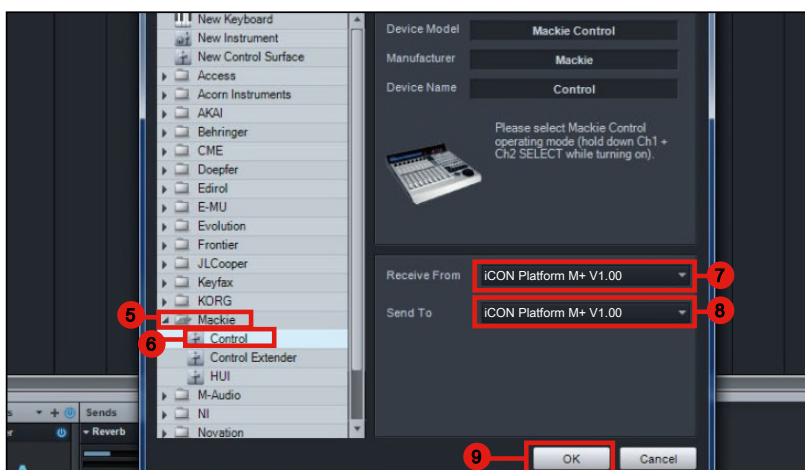
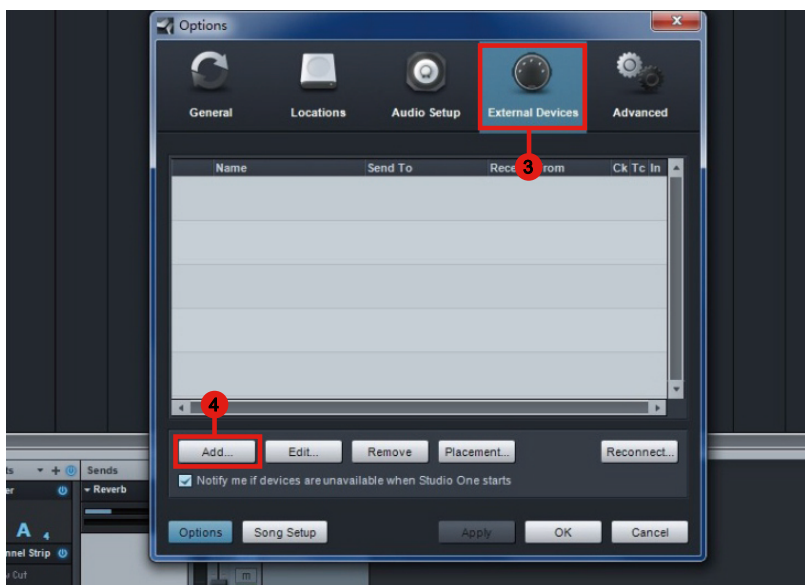
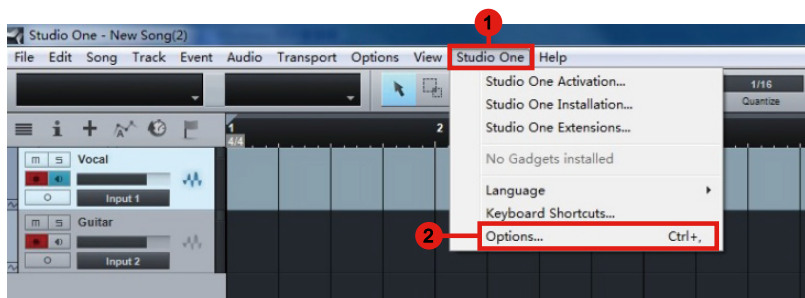
# Reason



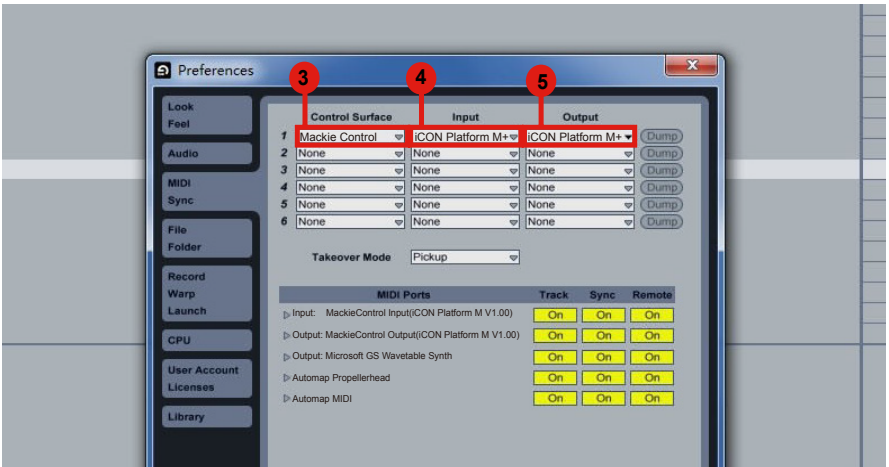
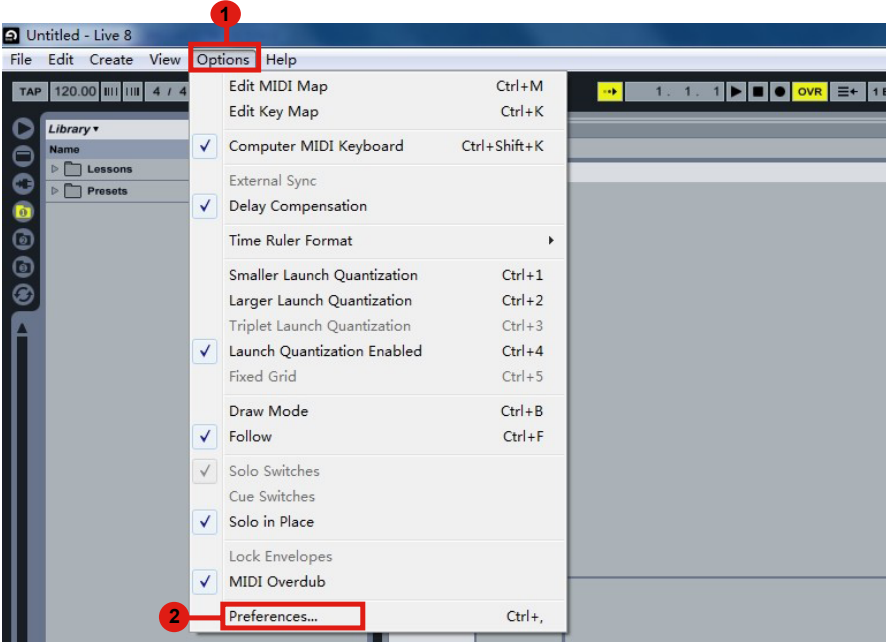
# Reaper



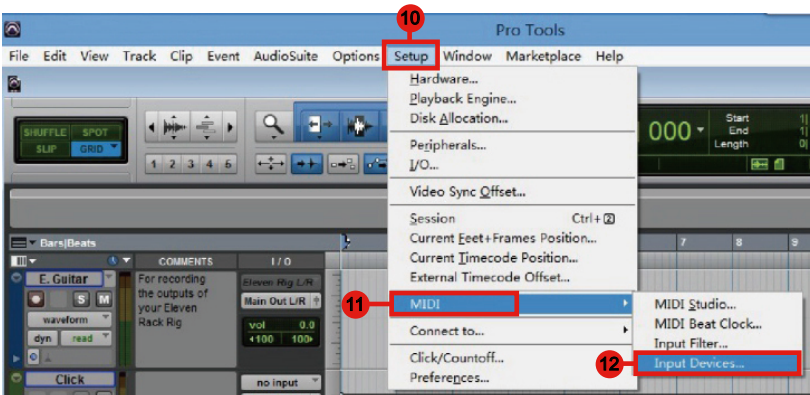
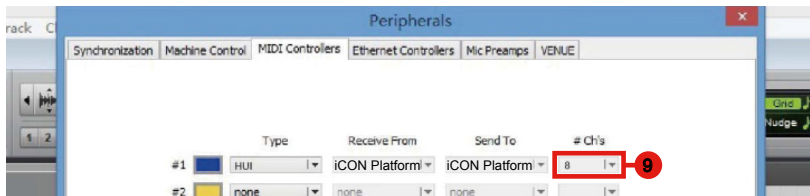
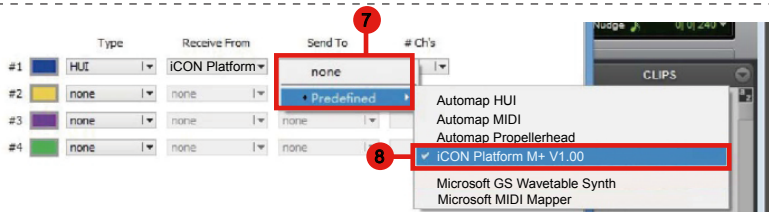
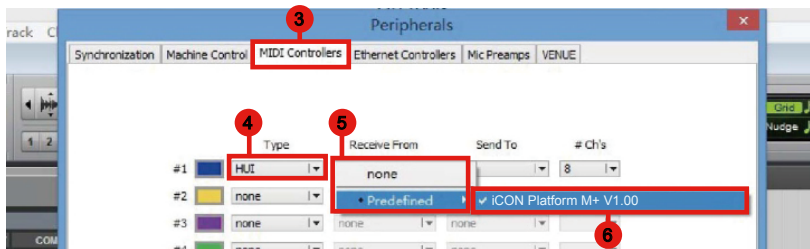
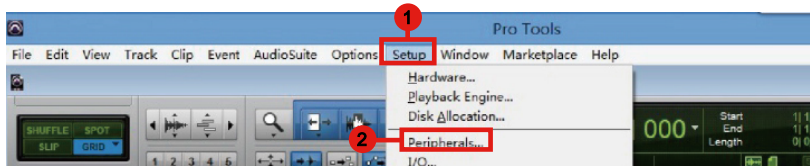
# Studio One



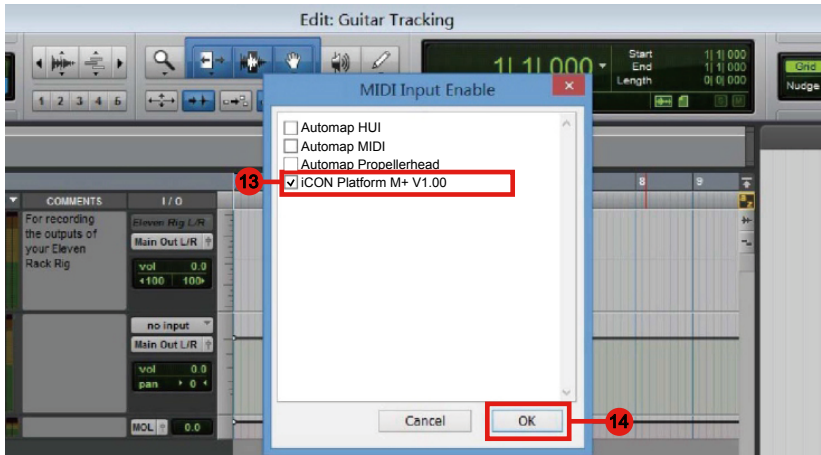
# Ableton Live



# Pro Tools







# iMap™ Software for Mac OS X

Please follow the procedures below step-by-step to launch your iMap™ software to Mac OS X.

1. Insert the Utility CD in your CD-Rom and double click “Platform M+ iMap” icon.

*Tip: By "drag and drop" the Platform-M+" icon into the "Applications" folder, you could create a "iMap" shortcut on your Mac's desktop.*

2. Click "Continue".

3. Click "Install".

4. Input your password to allow the installation to start .

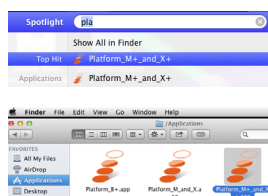
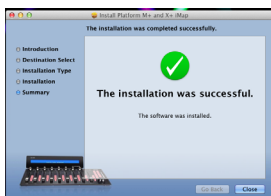
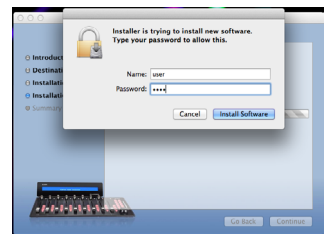
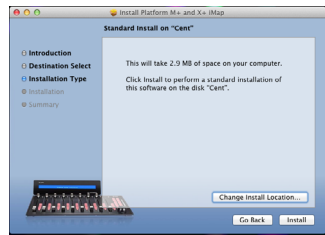
5. When the installation is complete, click "Close".

6. You could find the Platform\_M + \_and\_X + application inside the "Spotlight" and click to run it.

Or you could open the "Applications" folder in Finder and run the iMap.

7. User-interface of the iMap.

*Tip: By "drag and drop" the Platform-M+" icon into the "Applications" folder, you could create a "iMap" shortcut on your Mac's desktop.*



# Installing iMap™ Software for Windows

Please follow the procedures below step-by-step to install your iMap™ software.

## 1. Turn on your PC.

## 2. Insert the Utility CD in your CD-Rom.

After you have inserted the CD into your CD-Rom, an installation screen should appear as shown in diagram 1; click “Install”.

**(Note: If the Installation screen do not appear automatically. Go to the CD folder and double click “Setup”.)**

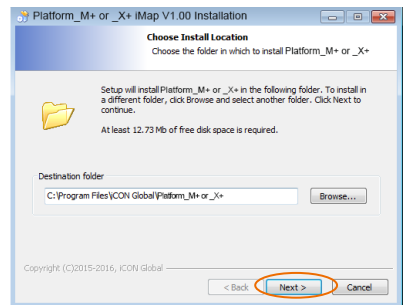
**(Note: If the file was downloaded from our website, please unzip the file and click the setup icon.)**



Platform\_M+\_an  
d\_X+\_iMap\_Win\_  
Setup\_V2.00.exe

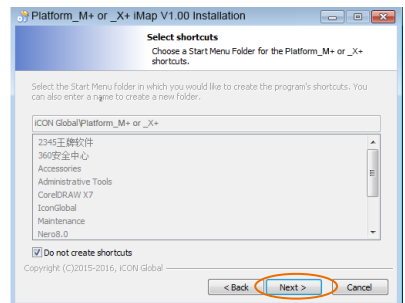
## 3. Choose Install Location

Choose your preferred install location for iMap™ or use the default location and click “Next”.



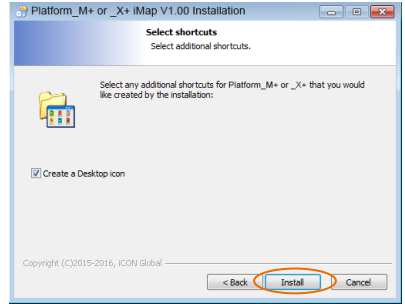
## 4. Select shortcut

Select the start menu folder in which you would like to create the iMap™ shortcut. Then click “Next”.



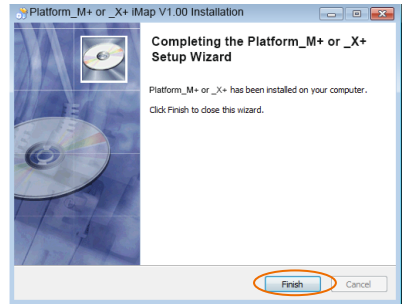
## 5. Create a shortcut on your desktop

Please untick the box if you do not want to place a shortcut icon on your desktop for iMap™, otherwise click “Next”.

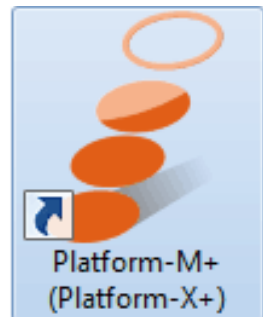


## 6. iMap™ started to install

The iMap™ installation has now started, wait for it to finish. Then click “Finish”.



## 7. Click the iMap logo on your desktop to launch the iMap software.

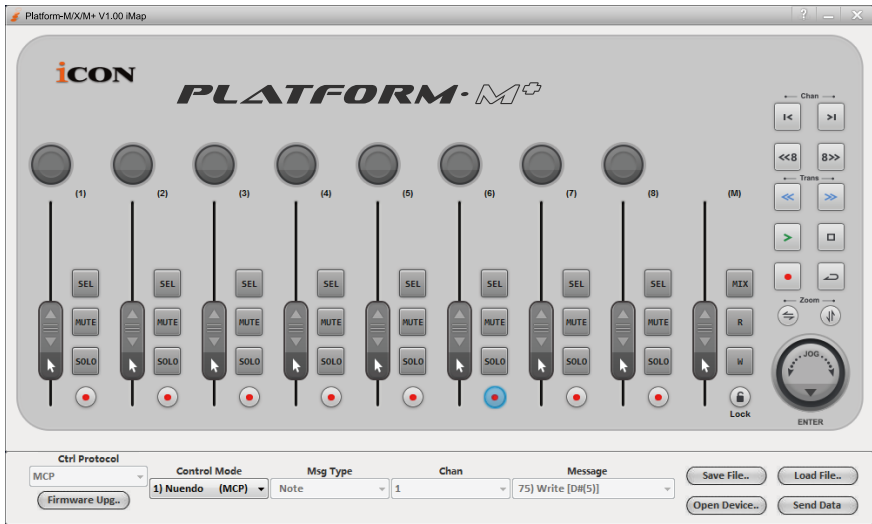


## ***Assigning DAW mode (Mackie Control/HUI) or self define MIDI functions with iMap™***

There are two different methods for setting your Platform M+ according to your need. In general, it would be much simpler and faster to set the device with Mackie Control/HUI protocol depended on your using DAW.

Or you could self define each control element on your Platform M+ with your own MIDI messages that provided on the iMap's function pull-down menu. However, unless you are fully understood the MIDI structure of your using DAW otherwise this would be a real hassles task for the set up. Actually we strongly recommend you to use the Mackie Control or HUI control mode as they are programmed according to a lot of user preferences and it will most likely suit your need.

# Assigning DAW mode (Mackie control/HUI) with iMap™



## iMap™ Platform M+ software panel

To begin the DAW mode setup, let make the connection of your Platform M+ with iMap. Please follow the below steps:

1. **Connect Platform M+ to your Mac/PC.**
2. **Launch iMap and click “Connect Device”.**  
*Note:* If your Platform M+ is not connected to your Mac/PC, the message “There are no MIDI input devices” will appear. Please connect Platform M+ to your Mac/PC with the provided USB cable.
3. **Select “Platform M+” at the pop-up menu as your MIDI out device.**

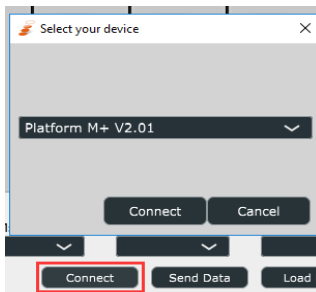
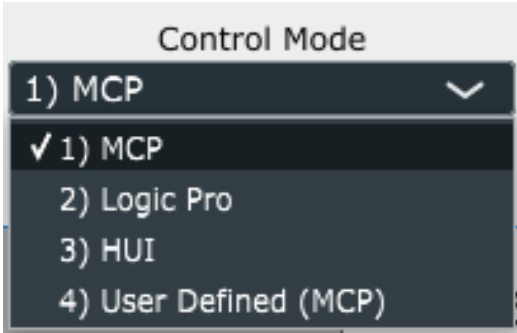


Diagram 7

4. According to your using DAW, select the DAW Mackie/HUI protocol mode at the “Mode” pull-down menu.

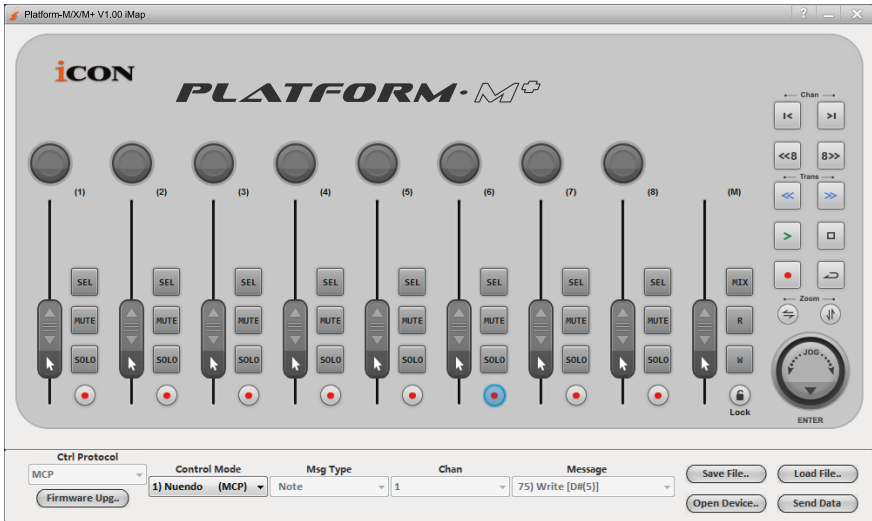


**Note:** In DAW mode (Mackie Control/HUI), you cannot change any MIDI message settings for any control on Platform M+.

**Tip:** You may also use the hardware to select DAW mode instead of iMap. Please refer to P. 9 for instructions.

5. After you have finished all settings, click on "Send Data" button.
6. Close iMap.

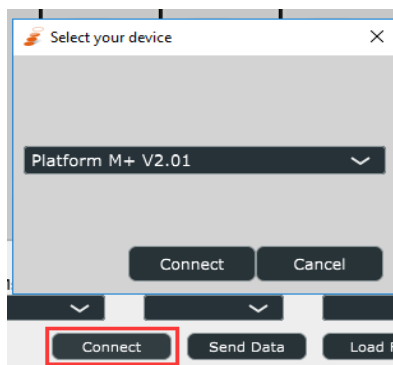
# Assigning MIDI message with User Define mode at iMap™



## iMap™ Platform M+ Software panel

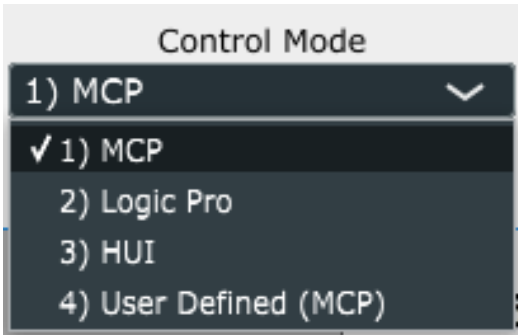
To begin the DAW mode setup, let make the connection of your Platform M+ with iMap. Please follow the below steps:

1. Connect Platform M+ to your Mac/PC.
2. Launch iMap and click “Connect ” button.
3. Select “Platform M+” at the pop-up menu as your MIDI out device.





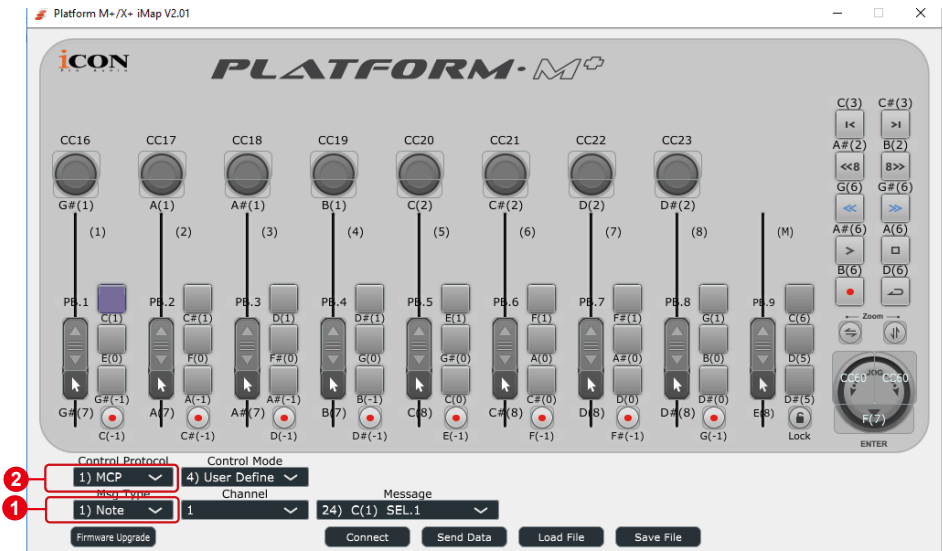
4. Select “User-Defined Mode” at the “Control Mode” pull-down menu. Please see below (P43) for each control element setting in User-Defined Mode.



5. After you have finished creating all settings, click “Send Data”.
6. Close iMap.

# Control element setup at User defines mode

## iMap™ Platform M+ Software panel

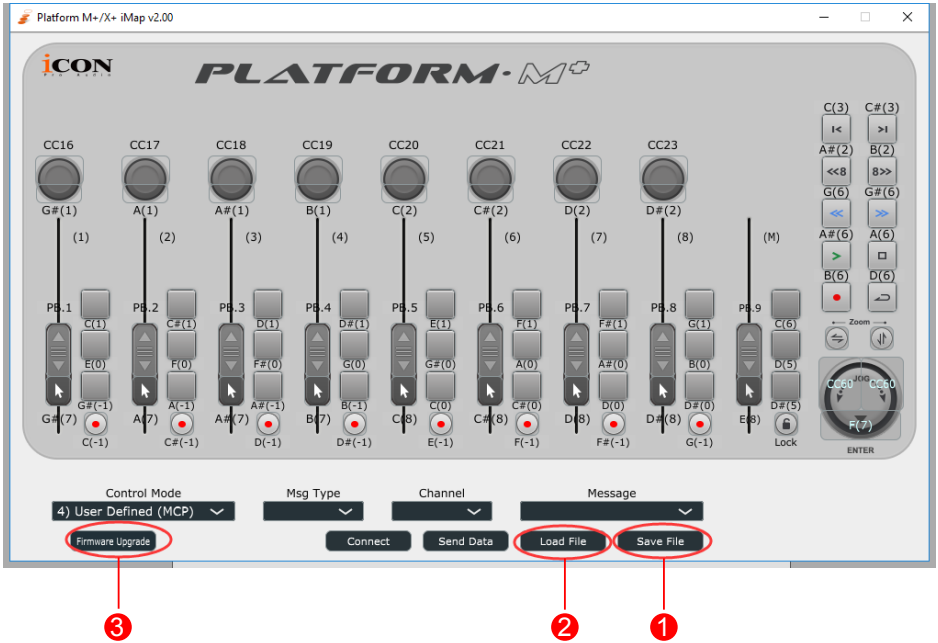


There are controls including faders, knobs, buttons, and a jog wheel on Platform M+ for which you may set your own MIDI messages. The four types of message include “Pitch”, “Note”, “Program”, and “CC” values you may adjust depending on the control element. Please refer to the table below for available control setting values.

## “Control elements chart”

Control protocol	Control	Element	Available MIDI message setting values		
			Message type	Channel	Message
MCP	Faders	Slid	Note	1-16	C(-1) to G(9)
			CC	1-16	Bank MSB to Poly Mode On
			Pitch	1-16	0-127
		Touch sensitive	Note	1-16	C(-1) to G(9)
			CC	1-16	Bank MSB to Poly Mode On
			Pitch	1-16	0-127
MCP	Knobs	Rotate	Note	1-16	C(-1) to G(9)
			CC	1-16	Bank MSB to Poly Mode On
			Pitch	1-16	0-127
		Enter	Note	1-16	C(-1) to G(9)
			CC	1-16	Bank MSB to Poly Mode On
			Pitch	1-16	0-127
MCP	JogWheel	Rotate counter-clockwise	Note	1-16	C(-1) to G(9)
			CC	1-16	Bank MSB to Poly Mode On
			Pitch	1-16	0-127
		Rotate clockwise	Note	1-16	C(-1) to G(9)
			CC	1-16	Bank MSB to Poly Mode On
			Pitch	1-16	0-127
		Enter	Note	1-16	C(-1) to G(9)
			CC	1-16	Bank MSB to Poly Mode On
			Pitch	1-16	0-127
MCP	Buttons	All buttons except "Lock" button	Note	1-16	C(-1) to G(9)
			CC	1-16	Bank MSB to Poly Mode On
			Pitch	1-16	0-127

# Other Functions in iMap™



## 1. “Save file” button

Click this button to save your current settings for the Platform M+. The file is an “. Platform M+” file.

## 2. “Load file” button

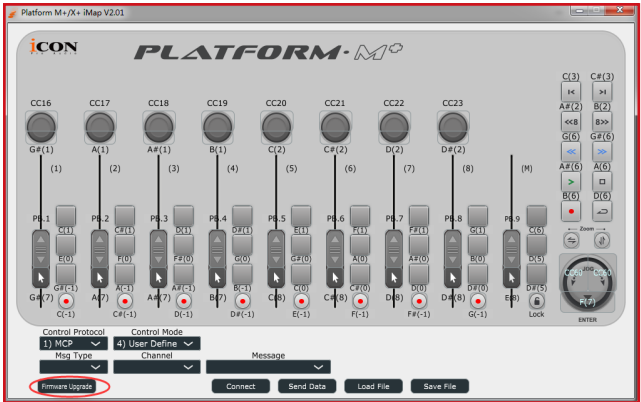
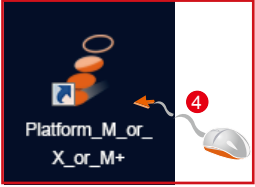
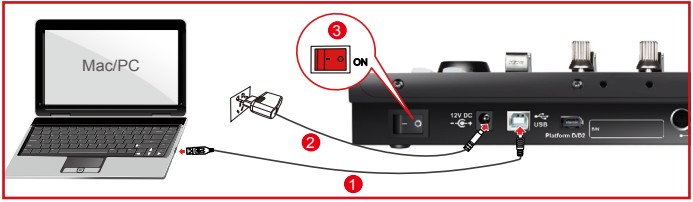
Click this button to load a previously saved “. Platform M+” setting file for your Platform M+.

## 3. “Firmware Upgrade” button

Click this button to enter into the firmware upgrade window for Platform M+. Please refer to P. 45 for the firmware upgrade procedure.

# Firmware upgrade

## Platform M+ functional firmware upload procedure



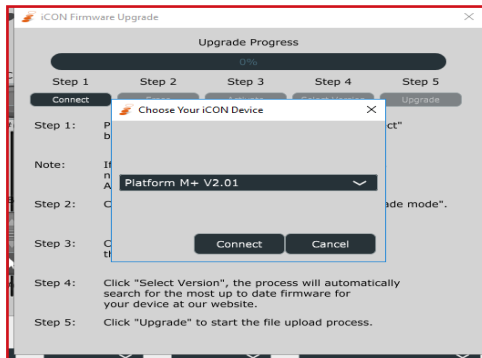
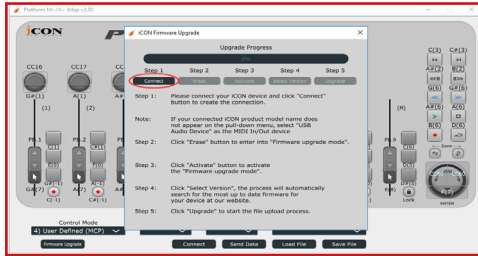
**Warning:** The firmware upload process "MUST" be completed and not be interrupted during the file upload process, otherwise the may not be able to restore again and as a result service center will be required to restore the device.

**i** **Firmware Upgrade v1.04 About To Start**

Please verify that your device is connected directly to your system before upgrading firmware. USB hubs and similar devices may disrupt the upgrade process and possibly DAMAGE your device.

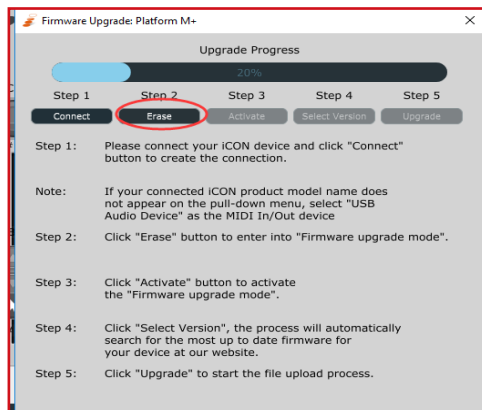
OK Cancel

**Step 1:** Please click the first "Connect" button to select Platform M+ as the MIDI output device.

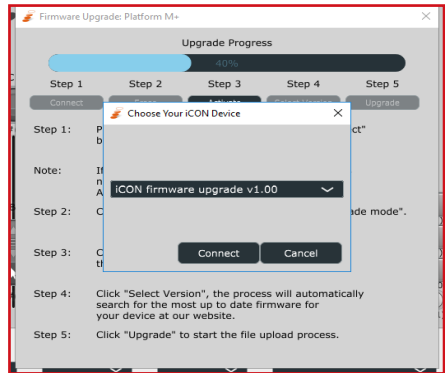
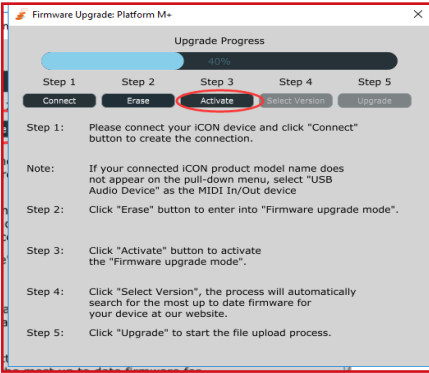


**Note:** If Platform M+ does not appear on the pull-down menu, select "USB Audio Device" as the MIDI In/Out device.

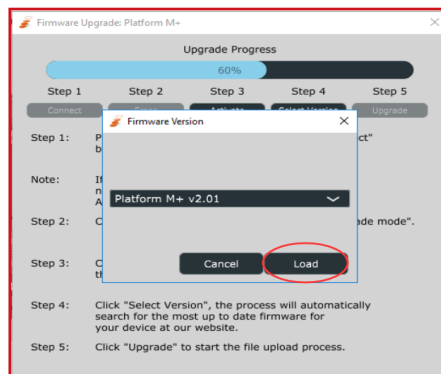
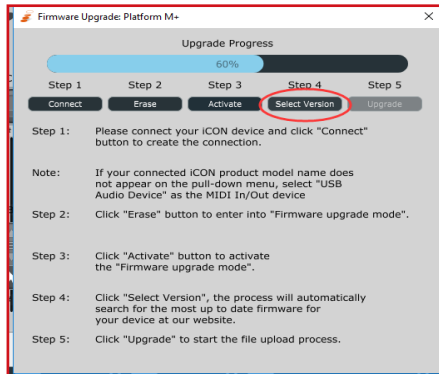
**Step 2:** Click the "Erase" button to erase the firmware. Step 3 will only be enabled if the firmware has erased successfully.



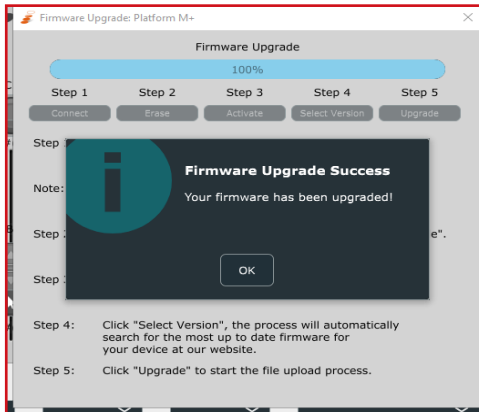
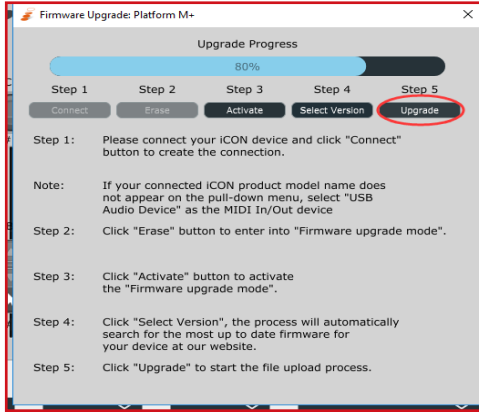
**Step 3:** Please wait a few seconds to ensure the unit has recycled completely, and then click the third button "Activate" and select "Firmware Upgrade V1. 00" to activate the firmware upgrade mode.



**Step 4:** Click the "Select version" or "Open File" button to browse the new firmware such as "Platform\_M+\_V2. 00. bin".



**Step 5:** Click the "Upgrade" button to upgrade the firmware, and wait until its completion.





# Restore the factory default settings

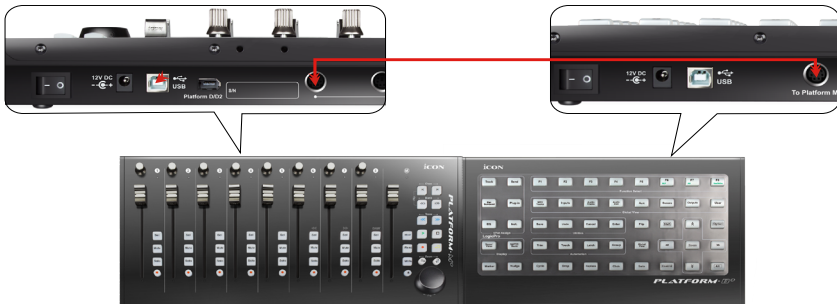
To restore your Platform M+ settings to factory default, simply launch iMap and import the original setting (i. e. without making any changes) to the device by the following steps.

1. Connect Platform M+ with the provided USB cable and launch iMap software.
2. Click the “Connect” button and select “Platform M+” as the MIDI input and output device.  
**Note:** If Platform M+ does not appear on the pull down menu, select USB audio as the MIDI I/O device.
3. Click “Send Data” to upload the setting to your Platform M+.
4. Close iMap, and then turn the Platform M+ power of off & on again.

# Connecting expansion modules

You to connect up to three dedicated platform serie control modules such as Platform B+ to the these extension ports. These modules will be recognized as Platform M+ in your DAW setting as Platform M+.

**Note:** Platform X+ has equipped its own USB connection for connecting to the PC/Mac directly.



**Platform M+ & Platform B+**

# Specifications

Connector:	To computer	USB connector
Power supply:		12V/2. 5A DC
Current consumption:		2. 0A or less
Weight:		1. 855kg (4. 1lb)
Dimensions:		395(L) x 196(W) x 58(H)mm 15. 6"(L) x 7. 7"(W) x 2. 3"(H)

# Services

If your Platform M+ needs servicing, follow these instructions.

Check our online help centre at <http://support.iconproaudio.com/hc/en-us>, for information, knowledge, and downloads such as:

1. FAQ
2. Download
3. Learn More
4. Forum

Very often you will find solutions on these pages. If you don't find a solution, create a support ticket at our online Help Center at the link below, and our technical support team will assist you as soon as we can.

Navigate to <http://support.iconproaudio.com/hc/en-us> and then sign in to submit a ticket.

As soon as you have submitted an inquiry ticket, our support team will assist you to resolve the problem with your ICON ProAudio device as soon as possible.

To send defective products for service:

1. Ensure the problem is not related to operation error or external system devices.
2. Keep this owner's manual. We don't need it to repair the unit.
3. Pack the unit in its original packaging including end card and box. This is very important. If you have lost the packaging, please make sure you have packed the unit properly. ICON is not responsible for any damage that occurs due to non-factory packing.
4. Ship to the ICON tech support center or the local return authorization. See our service centers and distributor service points at the link below:

If you are located in North America  
Send the product to:  
**ICON Service Centre**  
**611 Potomac PL Ste 102**  
**Smyrna, 37167-5655 Tennessee.**  
**United States**  
**Tel.: +1 615 540 989**

If you are located in Hong Kong  
Send the product to:  
**ASIA OFFICE:**  
**Unit F, 15/F., Fu Cheung Centre,**  
**No. 5-7 Wong Chuk Yueng Street,**  
**Fotan,**  
**Sha Tin, N.T., Hong Kong.**

If you are located in Europe  
Send the product to:  
**ICON Europe GmbH**  
**Am Spitzberg 3**  
**15834 Rangsdorf**  
**Germany**  
**Telephone: +49-(0)33708-933-0**  
**Fax: +49-(0)33708-933-189**  
**E-Mail: [info@sound-service.eu](mailto:info@sound-service.eu)**

5. For additional update information please visit our website at:

[www.iconproaudio.com](http://www.iconproaudio.com)



[www.iconproaudio.com](http://www.iconproaudio.com)