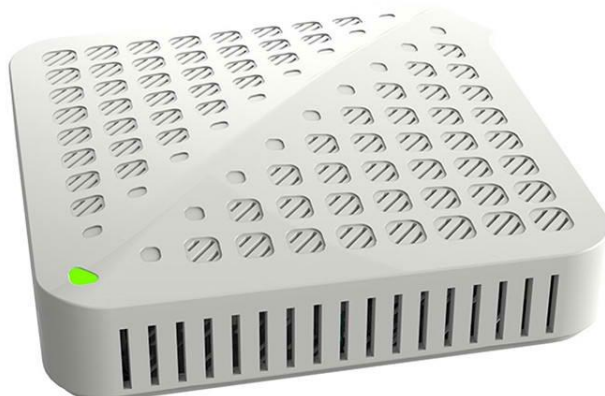




Product No. NWTE08



**Tenda SG80 8 Port Intelligent Recognition
Gigabit Switch**

Product Details

Although care has been taken to ensure the accuracy of the information provided in this Product Specification, CTR is in no way liable for any errors, omissions or changes in specifications.

Features

Gigabit Speed

It provides 8 10/100/1000 Mbps adaptive ports, all ports wire-speed forwarding, up to 1000 megabits per second

Intelligent Recognition

The ports can automatically identify the parallel line and intersecting line without pertinent setup

Plug and Play

It can be used directly when your line is connected, without special setup

International Standard

It completely conforms to the IEEE 802.3, IEEE 802.3 u, IEEE 802.3 ab, IEEE 802.3 x standards

Exquisite Appearance

Attractive MINI desktop design

Product Descriptions

SG80 is a gigabit Ethernet switch, of high performance and easy maintenance. The switch is dedicated to a high speed forward demand like schools, small business offices, tiny enterprises and other small places. With an attractive MINI desktop design, and 8 ports, it is particularly suitable for small-size network. It also provides 8 10/100/1000 Mbps auto-negotiation ports, and supports automatic MDI/MDIX.

These gigabit ports can not only be used as ordinary ports, but can also cascade to other network devices through UPLINK port. In full duplex mode, SG80 can be used to replace the 10, 100 Mbps switch, to solve the bottleneck problem of the server terminal connection. Upgrading the speed from 10, 100 Mbps to 1000 Mbps is the best solution that SG80 provides you with. In addition, you will benefit a lot from its easy installation and setup, and non- management. So, choose it to improve the transmission speed with your network.

Specifications

Standard & Protocol	IEEE802.3 10BaseT, IEEE802.3u 100 BaseTX, IEEE802.3ab, IEEE802.3X
Transmission Media	10BaseT: Cat. 3 UTP or better, 100 BaseTX: Cat. 5UTP/STP, 1 000BaseT: Cat. 5, over Cat. 5 or Cat.6 UTP/STP
Dimension	110mm x 110mm x 25mm
Consumption	3.9W (SG80)
Access Control	CSMA/CD
transmission mode	Store and forward
MAC Address Table	4K
Backbound Bandwidth	10Gbps
Forwarding Speed	10Mbps: 14880pps, 100Mbps: 148800pps, 1000Mbps: 1488000pps
Port	8*10/100/1000M adaptive RJ45 ports (Auto MDI/MDIX)
Network TOP	star network topologies
Power Adapter	DC 9V 600mA
Operation Temperature	0OC ~40OC
Storage Temperature	-40°C ~ 70°C
Operating Humidity	10% ~ 90%RH non-condensing
Storage Humidity	5% ~ 90%RH non-condensing

Head Office Location



Canada Tech Rent Inc. #4 - 2115 27th Avenue N.E., Calgary, Alberta, Canada T2E 7E4 Telephone: 888.645.8010